



Churchfield Road, W3

A well-presented three-bedroom duplex apartment set within a period building on the sought-after Churchfield Road.

Occupying the first and second floors and offering close to 900 sq. ft. of space, the property is flooded with natural light.

The flat offers three well-appointed bedrooms and two bathrooms.

The open plan kitchen/reception room are located on the first floor and offer generous dining space too.

- Three double bedrooms
- Two bathrooms
- Period building
- Moments of amenities
- Close to transports
- Sought-after area

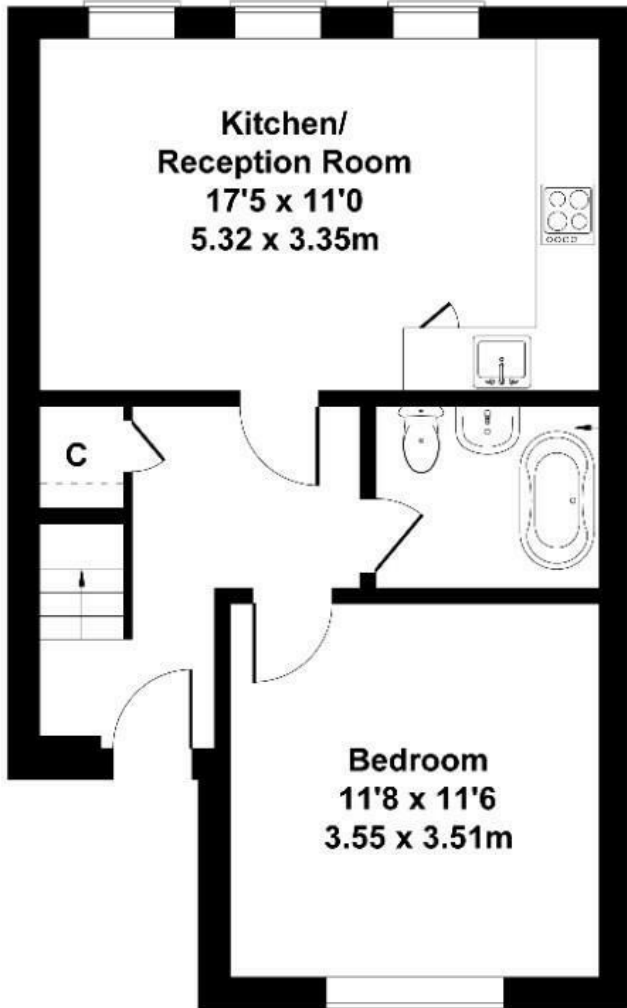
£485,000

Churchfield Road

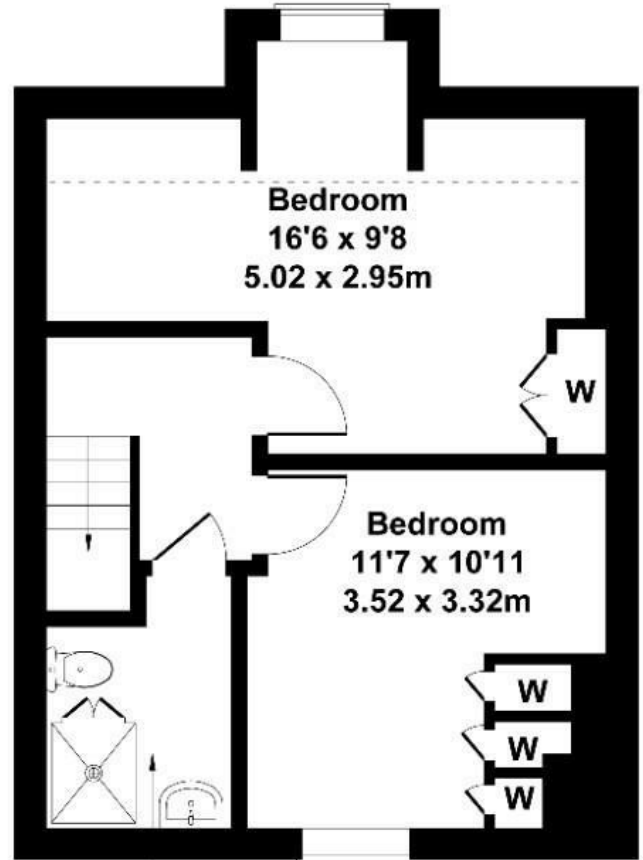
Approximate Gross Internal Area
861 sq ft - 80 sq m



Bathroom
7'0 x 5'8
2.13 x 1.72m



GROUND FLOOR



FIRST FLOOR

Not to Scale. Produced by The Plan Portal 2025
For Illustrative Purposes Only.

Energy Efficiency Rating		
	Current	Potential
<i>Very energy efficient - lower running costs</i>		
(92 plus) A		
(81-91) B		
(69-80) C	77	77
(55-68) D		
(39-54) E		
(21-38) F		
(1-20) G		
<i>Not energy efficient - higher running costs</i>		
England & Wales	EU Directive 2002/91/EC	