



Nemoure Road, W3

A well-presented two-bedroom first floor flat set on Nemoure Road which is just a short walk from Acton Mainline station.

In brief, the property is over 600 sq ft in size, is in very good condition and has two good-sized bedrooms, family sized bathroom, separate kitchen and a large reception room.

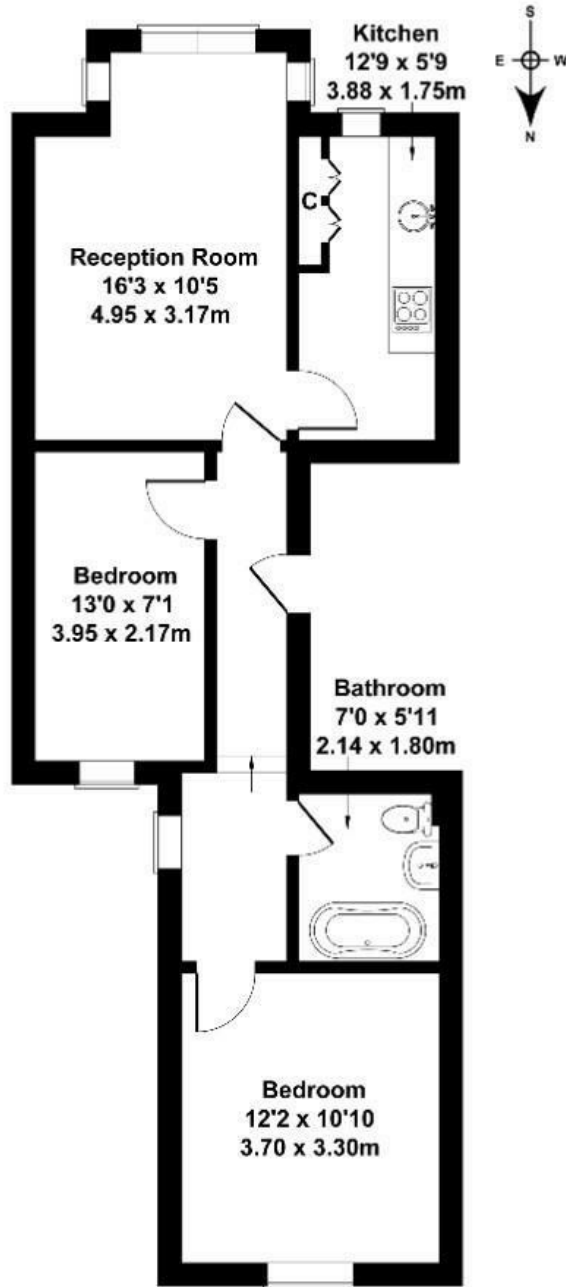
Further benefits are great light, long lease of 165 years and comes with no onward chain.

- Period conversion
- Two spacious bedrooms
- Separate kitchen
- No chain
- Long lease 165 years remaining
- Short walk to Elizabeth line
- Quiet residential street
- New flooring

£469,000

Nemoure Road

Approximate Gross Internal Area
603 sq ft - 56 sq m



FIRST FLOOR

Not to Scale. Produced by The Plan Portal 2024
For Illustrative Purposes Only.

Energy Efficiency Rating		
	Current	Potential
<i>Very energy efficient - lower running costs</i>		
(92 plus) A		
(81-91) B		
(69-80) C		76
(55-68) D	61	
(39-54) E		
(21-38) F		
(1-20) G		
<i>Not energy efficient - higher running costs</i>		
England & Wales	EU Directive 2002/91/EC	