



## Woodfield Road, London

A stunning large brand-new conversion flat situated just a short distance from both Pitshanger high street and Ealing Broadway town centre. Featuring two large double bedrooms, two luxury bathrooms.

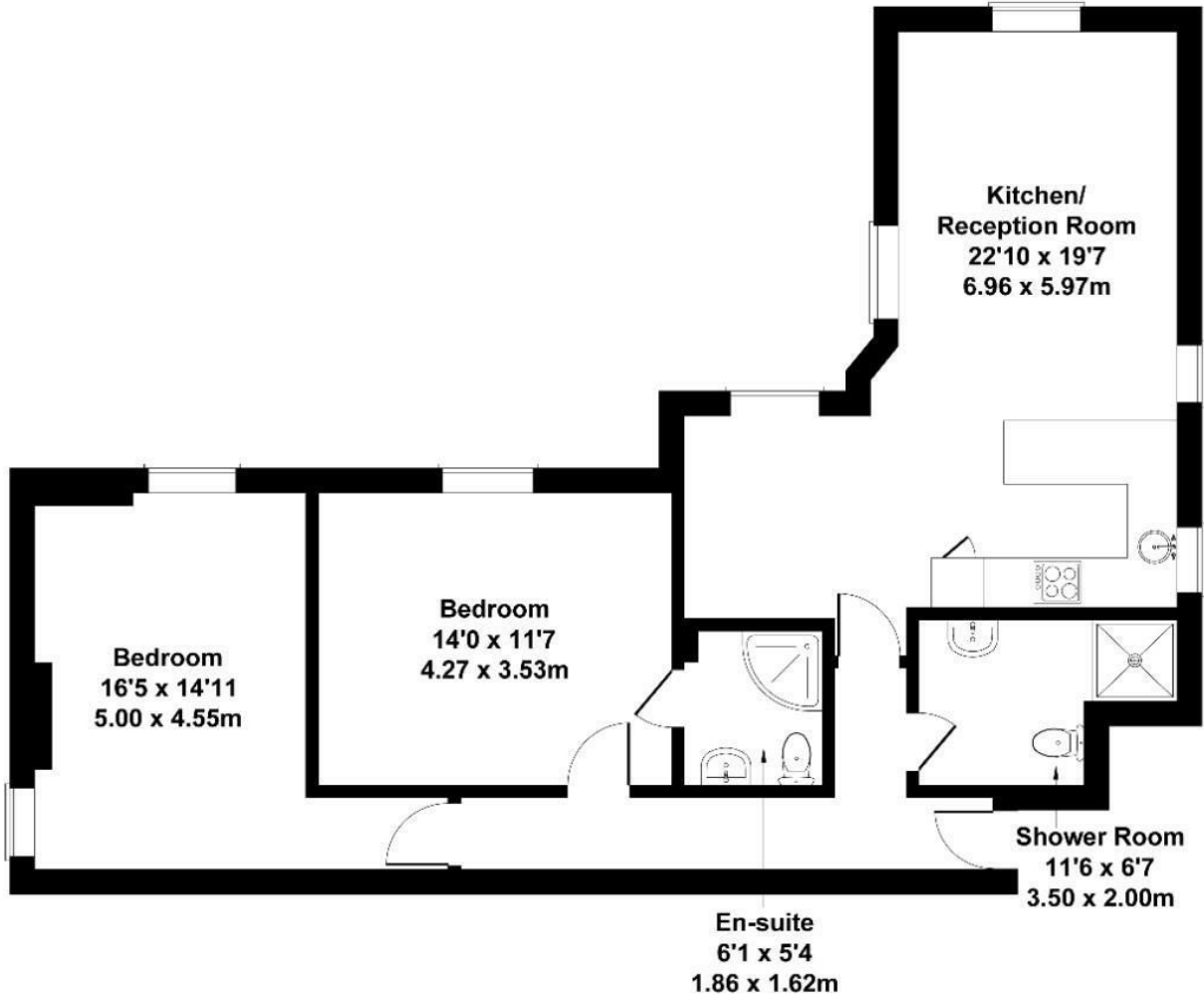
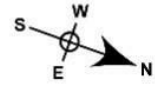
In total the property measures 872 sq. ft, comes in bespoke condition and has an open plan kitchen measuring 22'10 x 19'7. The property further benefits from a share in the freehold, underlying lease of 999 yrs and no onward chain.

- New large conversion flat
- Two double bedrooms
- Two bathrooms
- Share of freehold
- No chain
- Short distance to Ealing Broadway
- Close to 900 Sq ft
- First floor
- Immaculate condition
- Close to Pitshanger Park

£675,000

# Woodfield Road

Approximate Gross Internal Area  
872 sq ft - 81 sq m



Not to Scale. Produced by The Plan Portal 2024  
For Illustrative Purposes Only.

Energy Efficiency Rating		
	Current	Potential
<i>Very energy efficient - lower running costs</i>		
(92 plus) <b>A</b>		
(81-91) <b>B</b>		
(69-80) <b>C</b>		
(55-68) <b>D</b>		
(39-54) <b>E</b>		
(21-38) <b>F</b>		
(1-20) <b>G</b>		
<i>Not energy efficient - higher running costs</i>		
<b>England &amp; Wales</b>	EU Directive 2002/91/EC	