

Northfield Avenue, W13

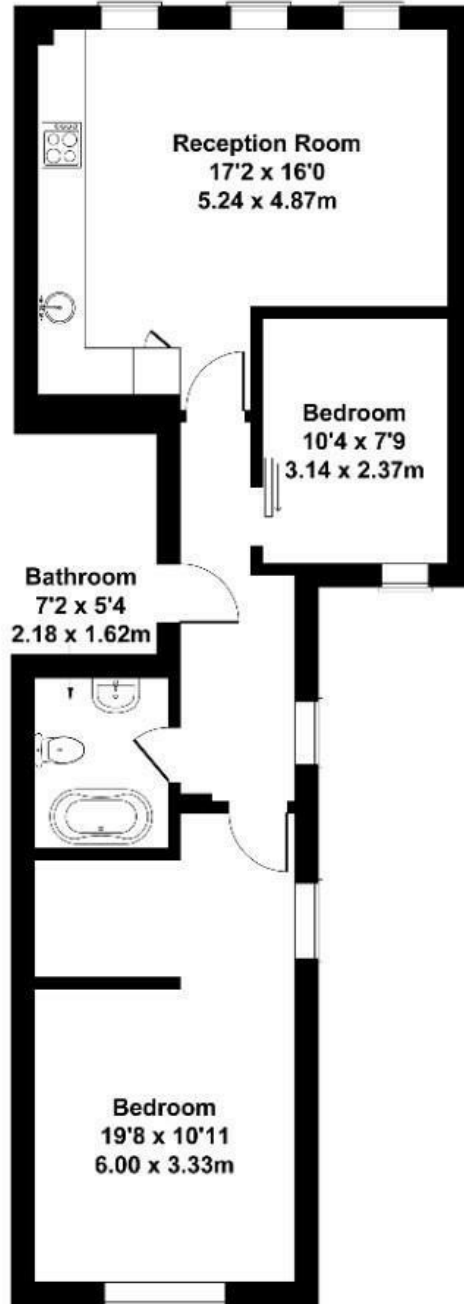
Long Let. A beautifully presented newly built first floor two-bedroom apartment located on the highly sought-after Northfield Avenue, W13.

- Two-bedroom first floor
- Private balcony
- Open Plan Kitchen/Living Space
- AEG Appliances/ Howdens Kitchen
- Northfields amenities
- Vacant

£2,300 Per Month

Northfield Avenue

Approximate Gross Internal Area
646 sq ft - 60 sq m



FIRST FLOOR

Not to Scale. Produced by The Plan Portal 2026
For Illustrative Purposes Only.

Energy Efficiency Rating		
	Current	Potential
<i>Very energy efficient - lower running costs</i>		
(92 plus) A		
(81-91) B		
(69-80) C	70	70
(55-68) D		
(39-54) E		
(21-38) F		
(1-20) G		
<i>Not energy efficient - higher running costs</i>		
England & Wales	EU Directive 2002/91/EC	