

Northfield Avenue, W13

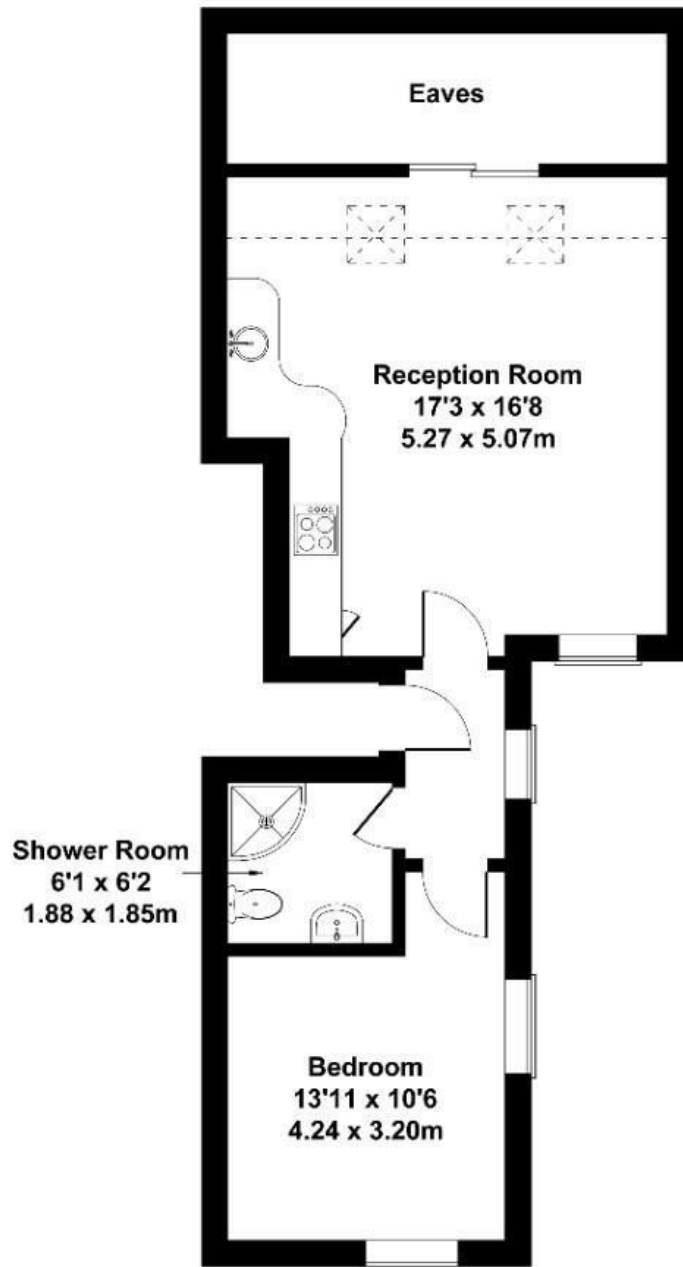
Long Let. A stunning newly built top floor one-bedroom apartment located on the popular Northfield Avenue, W13.

- One bedroom
- Top floor
- Great transport links
- Available now
- Brand new
- Northfields amenities

£1,800 Per Month

Northfield Avenue

Approximate Gross Internal Area
463 sq ft - 43 sq m



SECOND FLOOR

Not to Scale. Produced by The Plan Portal 2026
For Illustrative Purposes Only.

Energy Efficiency Rating		Current	Potential
<i>Very energy efficient - lower running costs</i>			
(92 plus) A			
(81-91) B			
(69-80) C			
(55-68) D		71	71
(39-54) E			
(21-38) F			
(1-20) G			
<i>Not energy efficient - higher running costs</i>			
England & Wales	EU Directive 2002/91/EC		