



## Northfield Avenue, W13

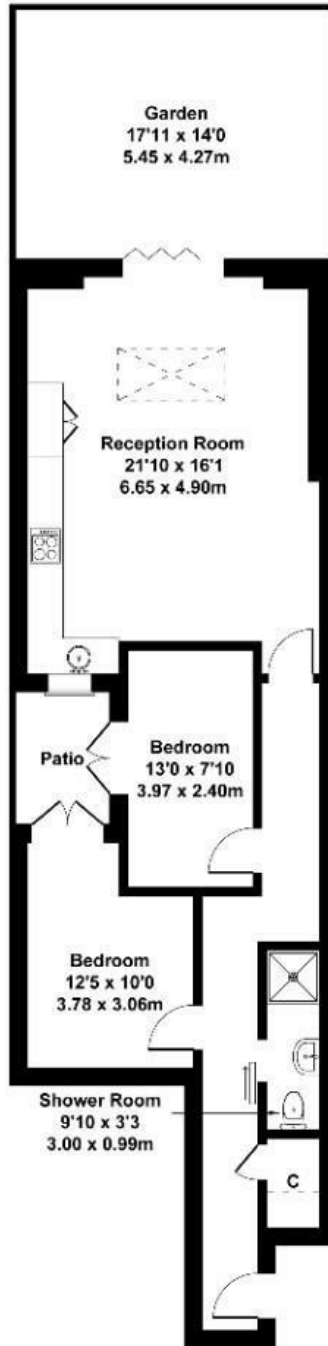
Long Let. An impressive newly built two-bedroom garden flat located on the popular Northfield Avenue, W13.

- Two-bedroom ground floor
- Private Garden
- Separate Patio
- Great transport links
- AEG Appliances/ Howdens Kitchen
- Vacant

£2,500 Per Month

# Northfield Avenue

Approximate Gross Internal Area  
721 sq ft - 67 sq m



## GROUND FLOOR

Not to Scale. Produced by The Plan Portal 2026  
For Illustrative Purposes Only.

Energy Efficiency Rating		Current	Potential
<i>Very energy efficient - lower running costs</i>			
(92 plus) <b>A</b>			
(81-91) <b>B</b>			
(69-80) <b>C</b>		73	73
(55-68) <b>D</b>			
(39-54) <b>E</b>			
(21-38) <b>F</b>			
(1-20) <b>G</b>			
<i>Not energy efficient - higher running costs</i>			
<b>England &amp; Wales</b>	EU Directive 2002/91/EC		