



## The Ridgeway, W3

A beautifully extended and substantial family home offering approximately 1,528 sq ft (142 sq m) of versatile accommodation arranged over three floors.

Boasting four bedrooms and two bathrooms, this impressive property is ideally positioned on the highly sought-after The Ridgeway, within the desirable Gunnersbury Triangle Conservation Area.

Offered to the market chain free with no onward chain, it presents an excellent opportunity for buyers seeking a straightforward move.

The ground floor comprises a bright entrance hall leading to an elegant bay-fronted reception room, ideal as a formal sitting room or home office.

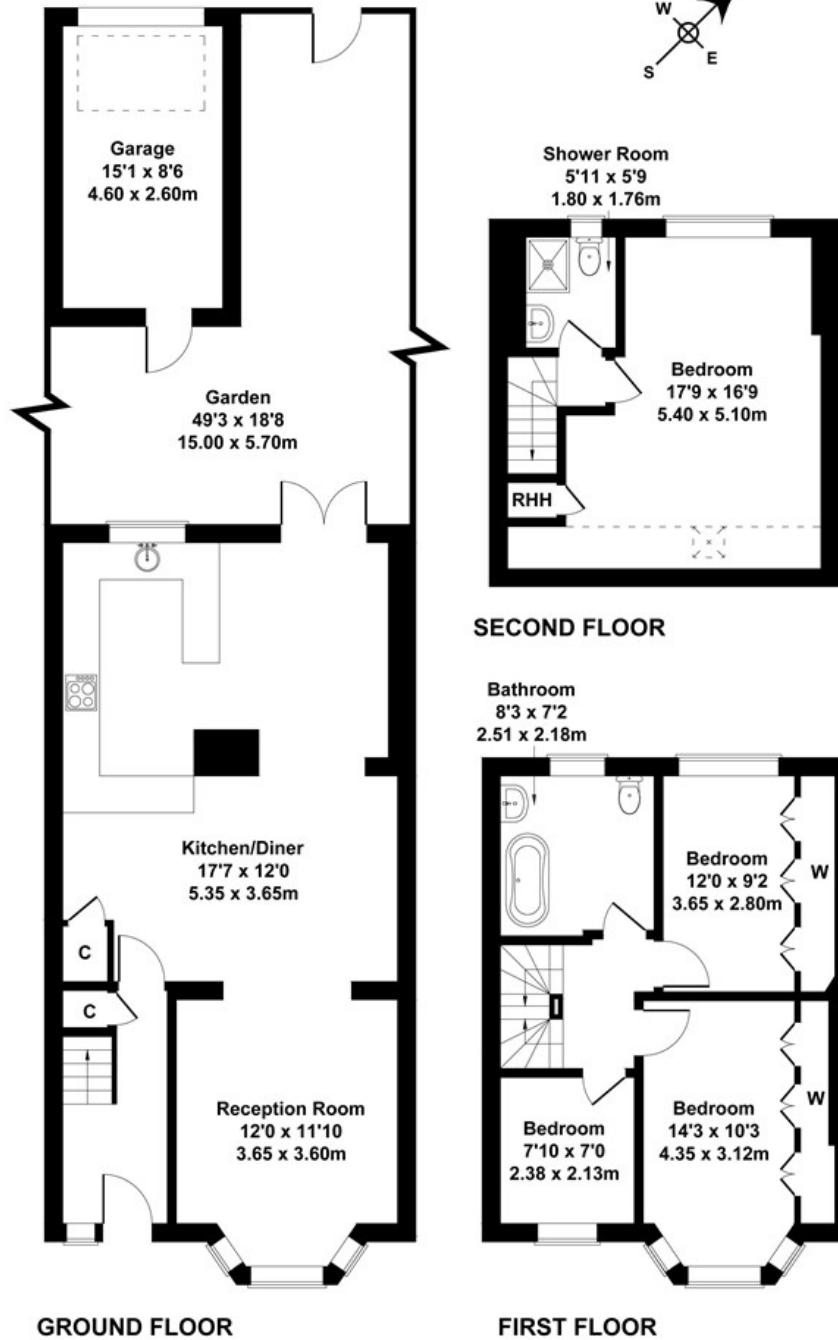
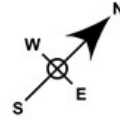
To the rear is an impressive open-plan kitchen/dining room extending over 17 ft, creating a fantastic family and entertaining space with direct access to the garden. The kitchen is fitted with a central island, ample storage and worktop space, while two useful storage cupboards complete the ground floor.

- Large family home
- Four bedrooms
- Two bathrooms
- Spacious open-plan kitchen/dining room
- Separate bay-fronted reception room
- Detached garage with rear access
- Gunnersbury Triangle Conservation Area
- Close to a selection of highly regarded primary and secondary schools
- Excellent transport links via Acton Town Underground Station
- Chain free

£875,000

# The Ridgeway

Approximate Gross Internal Area  
1528 sq ft - 142 sq m



Not to Scale. Produced by The Plan Portal 2022  
For Illustrative Purposes Only.

Energy Efficiency Rating		Current	Potential
Very energy efficient - lower running costs			
(92 plus) A			
(81-91) B			
(69-80) C			
(55-68) D			
(39-54) E			
(21-38) F			
(1-20) G			
Not energy efficient - higher running costs			
<b>England &amp; Wales</b>		EU Directive 2002/91/EC	
		69	81