

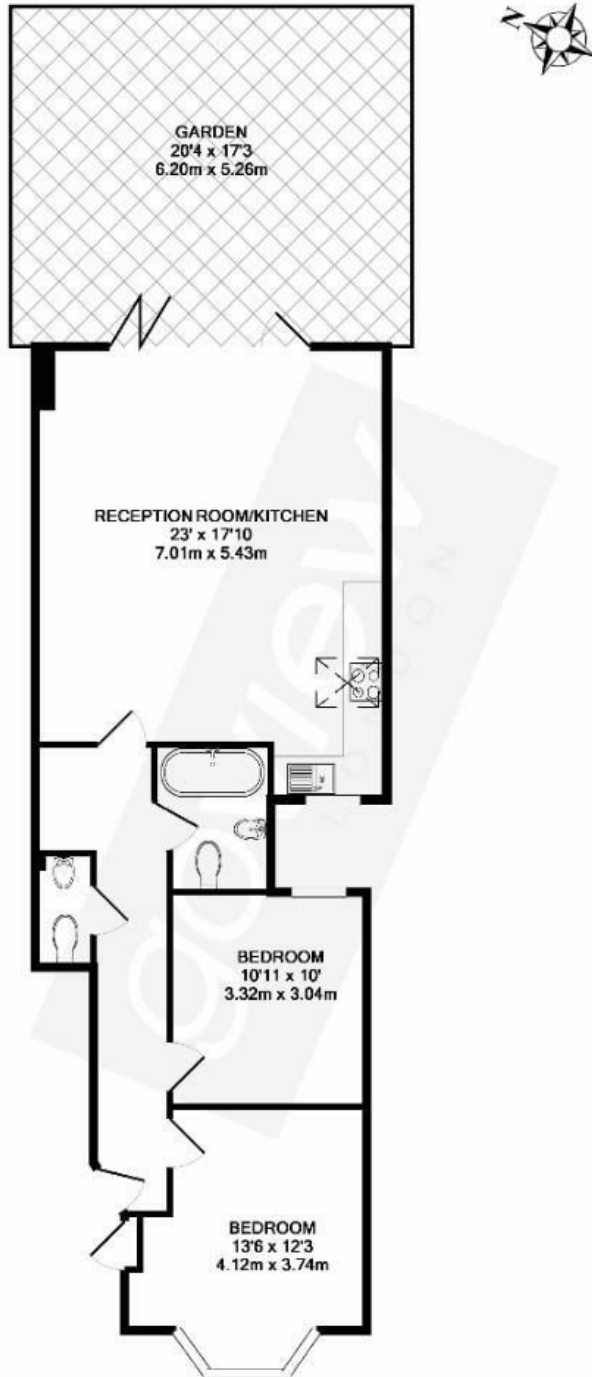


Willcott Road, W3

A well-presented two double bedroom ground floor garden flat, ideally located on Willcott Road close to both Ealing Common and Acton Town.

- Two double bedrooms
- Ground floor flat
- Modern interior throughout
- Private rear garden
- Permit parking available
- Close to local transport

£2,550 Per Month



TOTAL APPROX. FLOOR AREA 865 SQ.FT. (80.4 SQ.M.)

Whilst every attempt has been made to ensure the accuracy of the floor plan contained here, measurements of doors, windows, rooms and any other items are approximate and no responsibility is taken for any error, omission, or mis-statement. This plan is for illustrative purposes only and should be used as such by any prospective purchaser. The services, systems and appliances shown have not been tested and no guarantee as to their operability or efficiency can be given.
Made with Metropix 62016

Energy Efficiency Rating		
	Current	Potential
<i>Very energy efficient - lower running costs</i>		
(92 plus) A		
(81-91) B		
(69-80) C		
(55-68) D	59	59
(39-54) E		
(21-38) F		
(1-20) G		
<i>Not energy efficient - higher running costs</i>		
England & Wales	EU Directive 2002/91/EC	