



## Byron Way, UB5

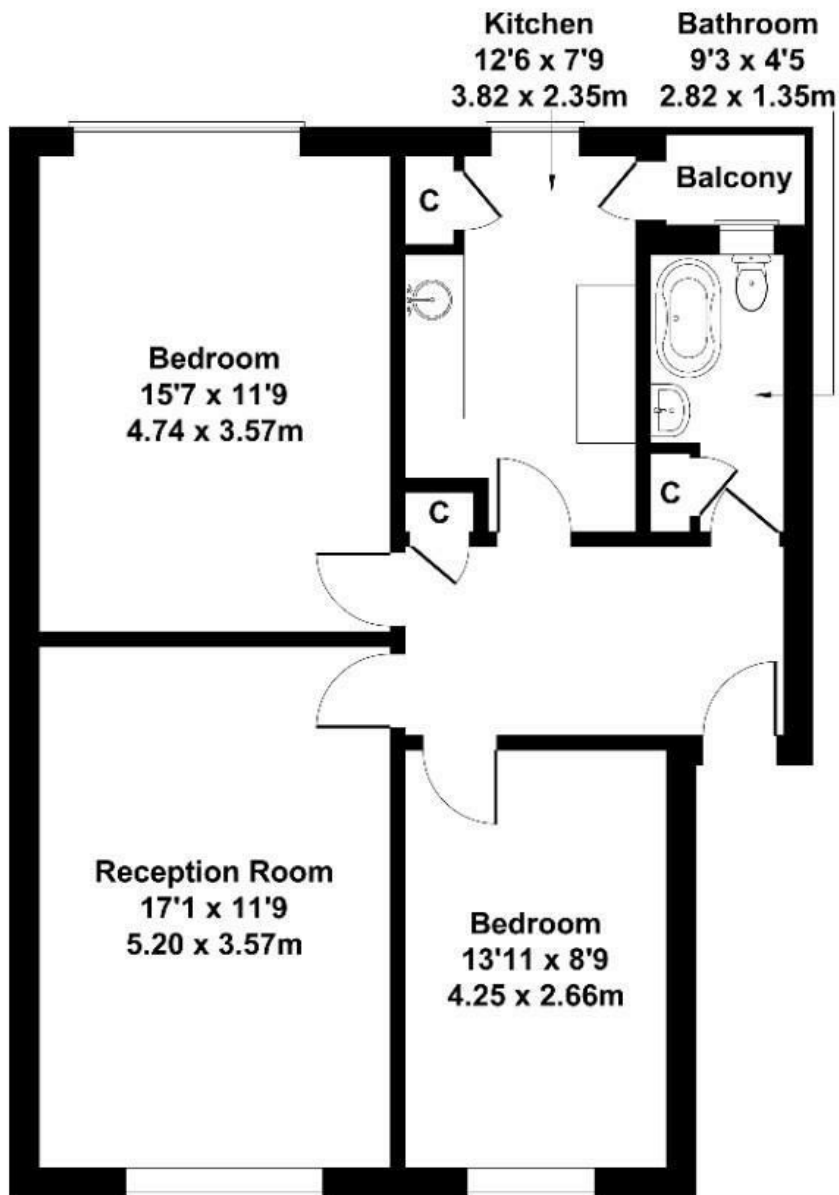
LONG LET. This smart two double bedroom flat boasts spacious rooms, private balcony and is available for immediate occupation.

- Available now
- Balcony
- Unfurnished
- Two bedrooms
- Parking
- Great for local amenities and transport

£1,600 Per Month

# Byron Way

Approximate Gross Internal Area  
764 sq ft - 71 sq m



## SECOND FLOOR

Not to Scale. Produced by The Plan Portal 2026  
For Illustrative Purposes Only.

Energy Efficiency Rating		
	Current	Potential
<i>Very energy efficient - lower running costs</i>		
(92 plus) <b>A</b>		
(81-91) <b>B</b>		
(69-80) <b>C</b>		
(55-68) <b>D</b>	61	
(39-54) <b>E</b>		
(21-38) <b>F</b>		
(1-20) <b>G</b>		
<i>Not energy efficient - higher running costs</i>		
<b>England &amp; Wales</b>	EU Directive 2002/91/EC	