

## Birkbeck Avenue, W3

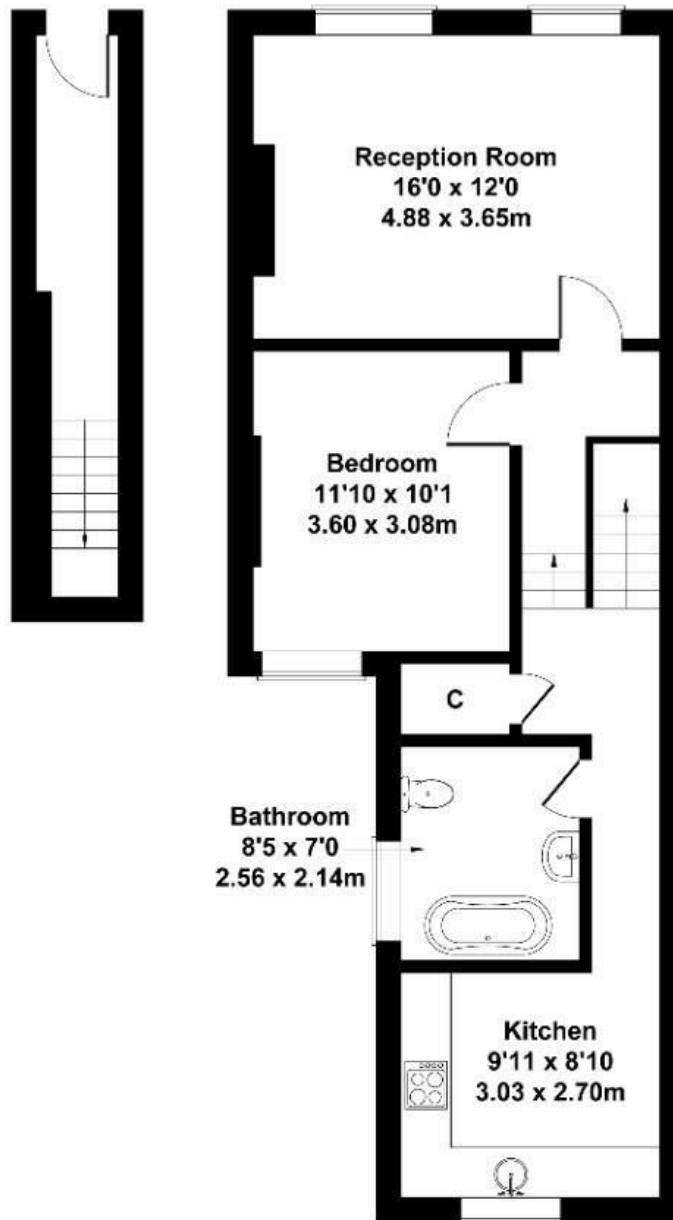
LONG LET. Recently refurbished, this bright and spacious one-bedroom flat is set on a quiet residential street and offers well-presented interiors throughout.

- One bedroom apartment
- Modern interior
- Spacious reception room
- Permit parking
- Available now
- Early viewings advised

£1,850 Per Month

# Birkbeck Avenue

Approximate Gross Internal Area  
678 sq ft - 63 sq m



**GROUND FLOOR**

**FIRST FLOOR**

Not to Scale. Produced by The Plan Portal 2025  
For Illustrative Purposes Only.

Energy Efficiency Rating		
	Current	Potential
<i>Very energy efficient - lower running costs</i>		
(92 plus) <b>A</b>		
(81-91) <b>B</b>		
(69-80) <b>C</b>		
(55-68) <b>D</b>		
(39-54) <b>E</b>		
(21-38) <b>F</b>		
(1-20) <b>G</b>		
<i>Not energy efficient - higher running costs</i>		
<b>England &amp; Wales</b>	EU Directive 2002/91/EC	