



Castlebar Hill, Ealing, W5

We are delighted to unveil one of the most anticipated new developments to come to Ealing. Situated on the prestigious Castlebar Hill, this exceptional collection of contemporary homes has been thoughtfully designed to offer elegant architecture, high-specification interiors and an enviable West London lifestyle.

This exceptional three bedroom, three bathroom residence has been thoughtfully designed to combine contemporary style with practical family living. Finished to an exquisite standard throughout, the property offers bright and spacious accommodation arranged over three floors, featuring an impressive open plan kitchen, dining and living space, ideal for both everyday living and entertaining.

The luxurious bedrooms all benefit from beautifully appointed en-suite bathrooms. The property also features a large utility room, underfloor heating throughout, solar panels and Electric Vehicle charging points. High quality finishes, energy efficient construction and carefully considered design details create a home that is both elegant and functional.

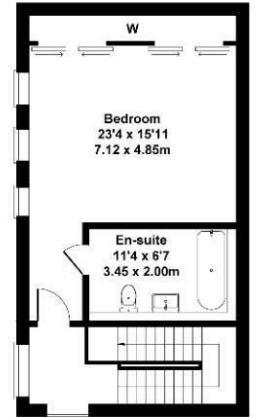
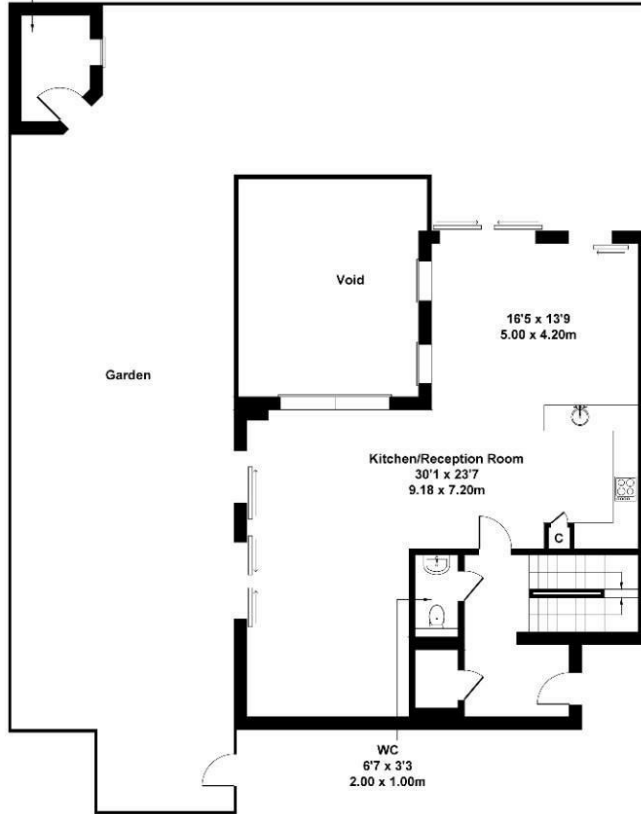
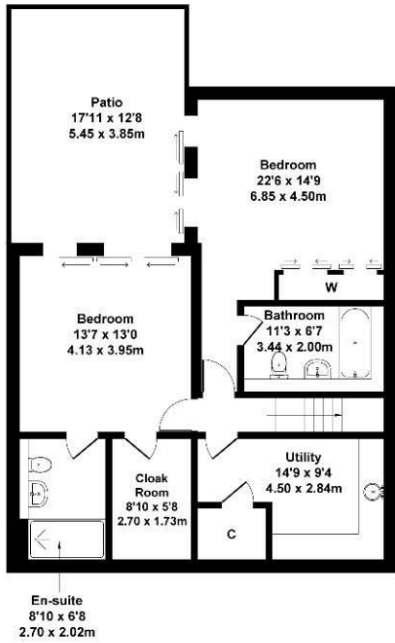
Guide Price £1,900,000

Castlebar Hill House D

Approximate Gross Internal Area
2217 sq ft - 206 sq m
(Excluding Void & Patio)



Outbuilding



Not to Scale. Produced by The Plan Portal 2025
For Illustrative Purposes Only.

Energy Efficiency Rating		
	Current	Potential
<i>Very energy efficient - lower running costs</i>		
(92 plus) A		
(81-91) B		
(69-80) C		
(55-68) D		
(39-54) E		
(21-38) F		
(1-20) G		
<i>Not energy efficient - higher running costs</i>		
England & Wales	EU Directive 2002/91/EC	