



Dominion House, W13

A stylish and well-presented two-bedroom apartment set within the sought-after Dominion House development in the heart of West Ealing. Positioned on an upper floor with lift access, this bright and spacious home offers approximately 700 sq ft of modern living accommodation and benefits from a private balcony with elevated views across the surrounding area.

The property features a generous open-plan reception room with contemporary fitted kitchen and integrated appliances, creating an ideal space for both relaxing and entertaining. There are two well-proportioned double bedrooms, alongside a modern family bathroom and excellent built-in storage throughout.

Further benefits include secure entry system and well-maintained communal areas.

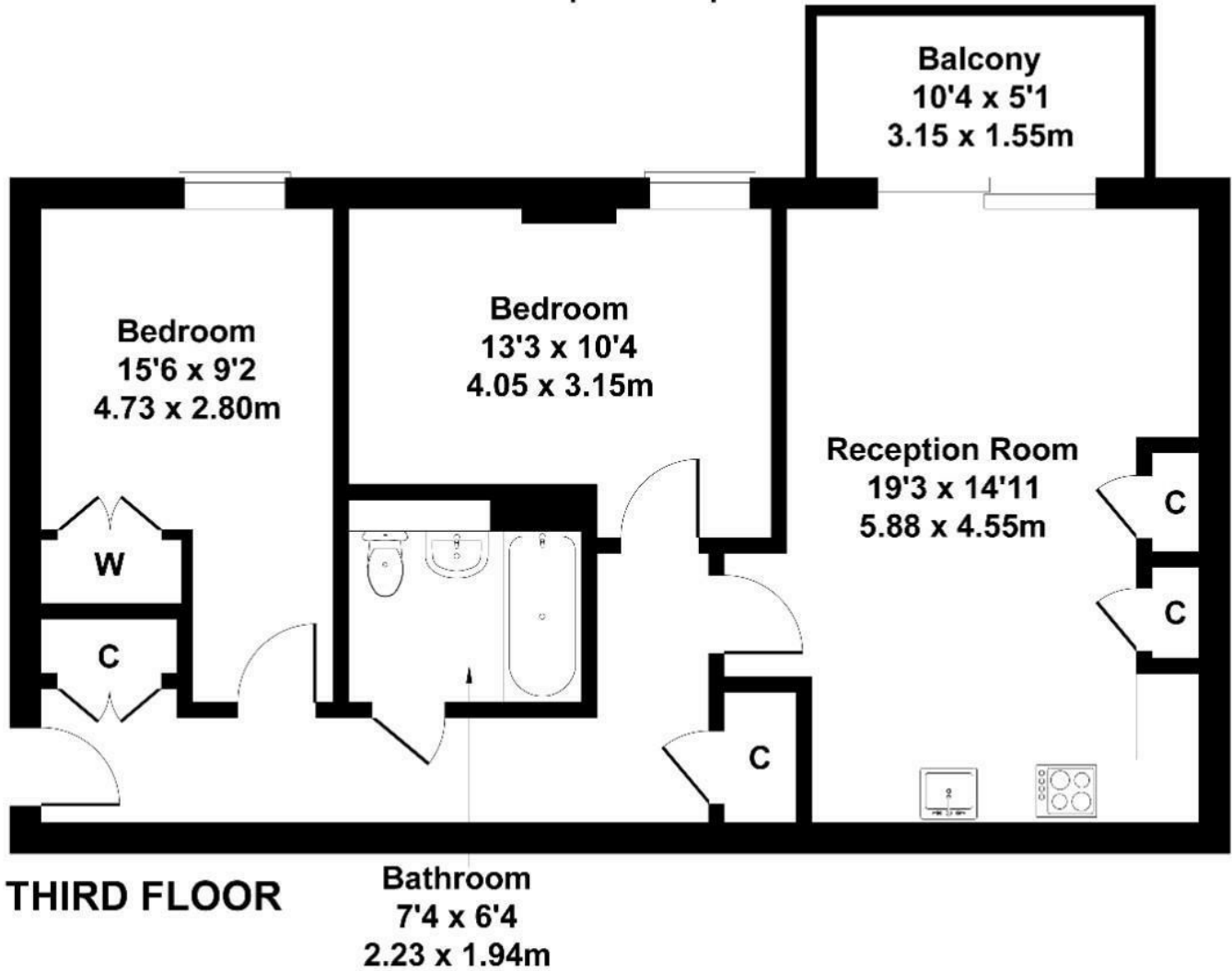
The property is offered to the market with no onward chain.

£399,950

- Two double bedrooms
- Open plan kitchen
- Modern interior
- Large private balcony
- Communal gardens
- Close to local amenities
- Close to transport
- 700 sq ft
- EPC B
- No onward chain

Dominion House

Approximate Gross Internal Area
700 sq ft - 65 sq m



Not to Scale. Produced by The Plan Portal 2026
For Illustrative Purposes Only.

Energy Efficiency Rating		Current	Potential
Very energy efficient - lower running costs			
(92 plus) A			
(81-91) B		81	81
(69-80) C			
(55-68) D			
(39-54) E			
(21-38) F			
(1-20) G			
Not energy efficient - higher running costs			
England & Wales	EU Directive 2002/91/EC		