



Embassy Court, Ealing, W5

Situated on a quiet residential road just a short stroll from Ealing common and close to Ealing Broadway is this large two-bedroom apartment, situated in the very popular Embassy Court.

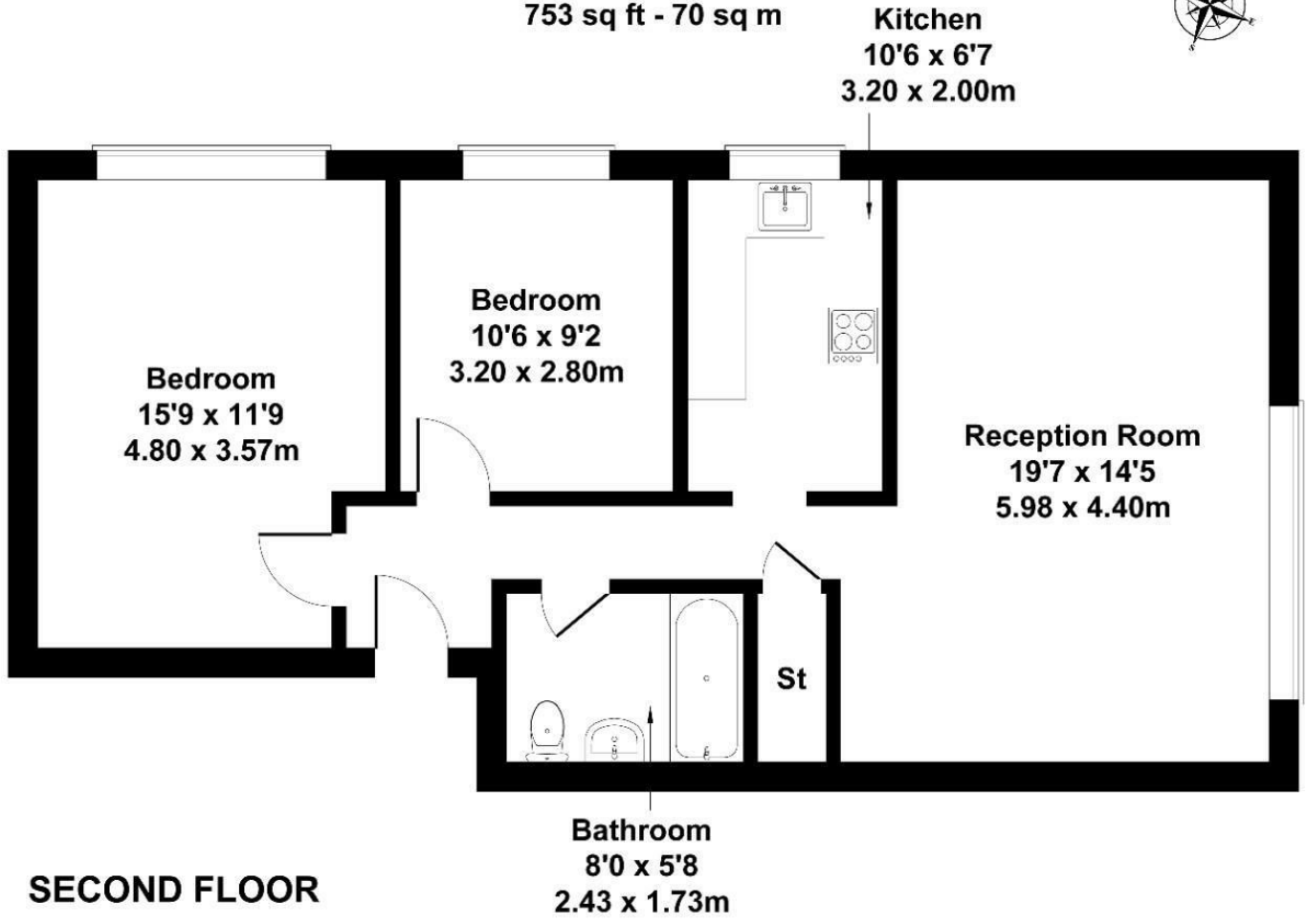
The property is newly refurbished throughout, has a separate kitchen, off street parking on a first-come, first-serve basis, a long lease (123yrs) and benefits from no onward chain and low service costs.

- Purpose Built
- Two double bedrooms
- Separate kitchen
- No onward chain
- Long Lease 123 years
- Good order throughout
- Short walk to Ealing Common
- Multiple transport links close by

£385,000

Embassy Court

Approximate Gross Internal Area
753 sq ft - 70 sq m



Not to Scale. Produced by The Plan Portal 2025
For Illustrative Purposes Only.

Energy Efficiency Rating		Current	Potential
Very energy efficient - lower running costs			
(92 plus) A			
(81-91) B			
(69-80) C			80
(55-68) D	61		
(39-54) E			
(21-38) F			
(1-20) G			
Not energy efficient - higher running costs			
England & Wales	EU Directive 2002/91/EC		