

Cumberland Park, W3

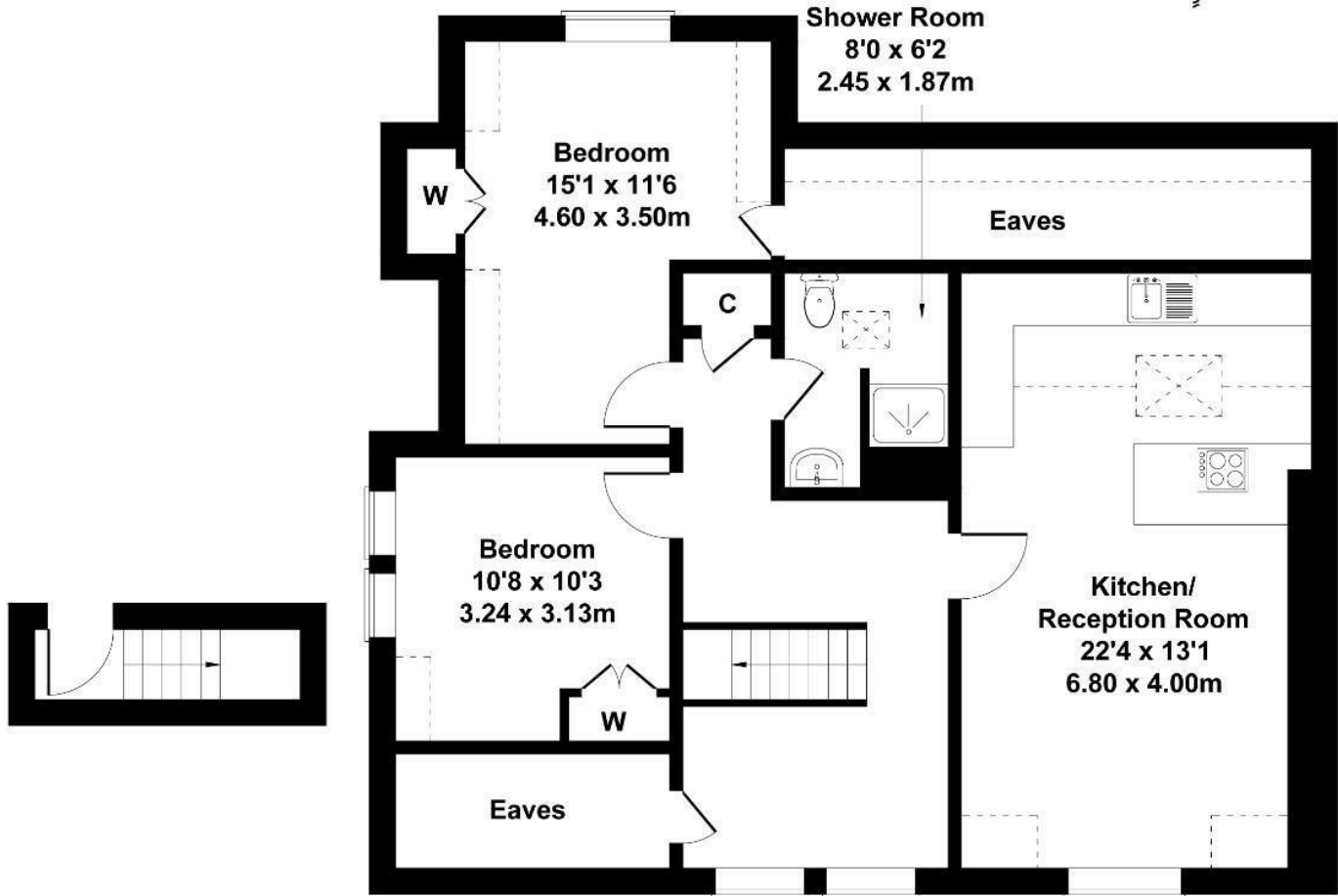
LONG LET: A bright and spacious two-bedroom new build apartment with a study, set over the top floor of a modern development on Cumberland Park.

- Two double bedrooms
- Separate study area
- Available 1st July 2026
- Open-plan living
- Permit parking available
- Near Elizabeth Line & Overground

£3,000 Per Month

Cumberland Park

Approximate Gross Internal Area
818 sq ft - 76 sq m
(Excluding Eaves)



FIRST FLOOR

SECOND FLOOR

Not to Scale. Produced by The Plan Portal 2025
For Illustrative Purposes Only.

Energy Efficiency Rating		
	Current	Potential
<i>Very energy efficient - lower running costs</i>		
(92 plus) A		
(81-91) B		
(69-80) C		
(55-68) D		
(39-54) E		
(21-38) F		
(1-20) G		
<i>Not energy efficient - higher running costs</i>		
England & Wales	EU Directive 2002/91/EC	