



Drayton Road, London

A beautifully presented, bright and airy one double bedroom Victorian garden flat, located on a leafy residential street. Just a stones throw from West Ealing Elizabeth Line station, the property is offered with a Share of Freehold and no onward chain.

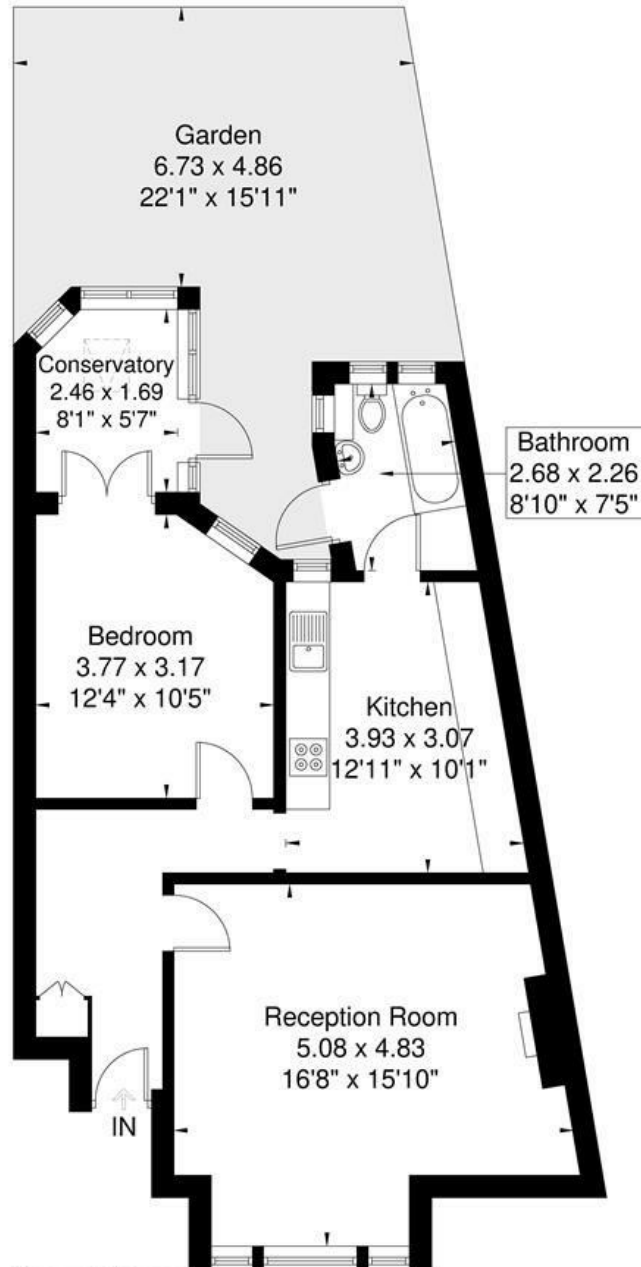
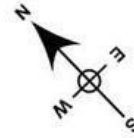
The property combines period details such as feature fireplaces and high ceilings with cornicing and ceiling roses, whilst boasting a modern kitchen, bathroom and new double glazed sash windows. There is a low maintenance private garden to the rear offering a quaint escape from the hustle and bustle of London life.

- One Double Bedroom
- Ground Floor Flat
- Period Features
- Short Walk to West Ealing Elizabeth Line
- Private Garden
- No Chain
- Share of Freehold
- Modern Kitchen and Bathroom

£425,000

Drayton Road

Approximate Gross Internal Area = 65.6 sq m / 706 sq ft



Ground Floor

Although every attempt has been made to ensure accuracy, all measurements are approximate.

The floorplan is for illustrative purposes only and not to scale.

© www.prspective.co.uk

Energy Efficiency Rating		
	Current	Potential
<i>Very energy efficient - lower running costs</i>		
(92 plus) A		
(81-91) B		
(69-80) C		
(55-68) D		
(39-54) E		
(21-38) F		
(1-20) G		
<i>Not energy efficient - higher running costs</i>		
England & Wales	EU Directive 2002/91/EC	