



Newburgh Road, W3

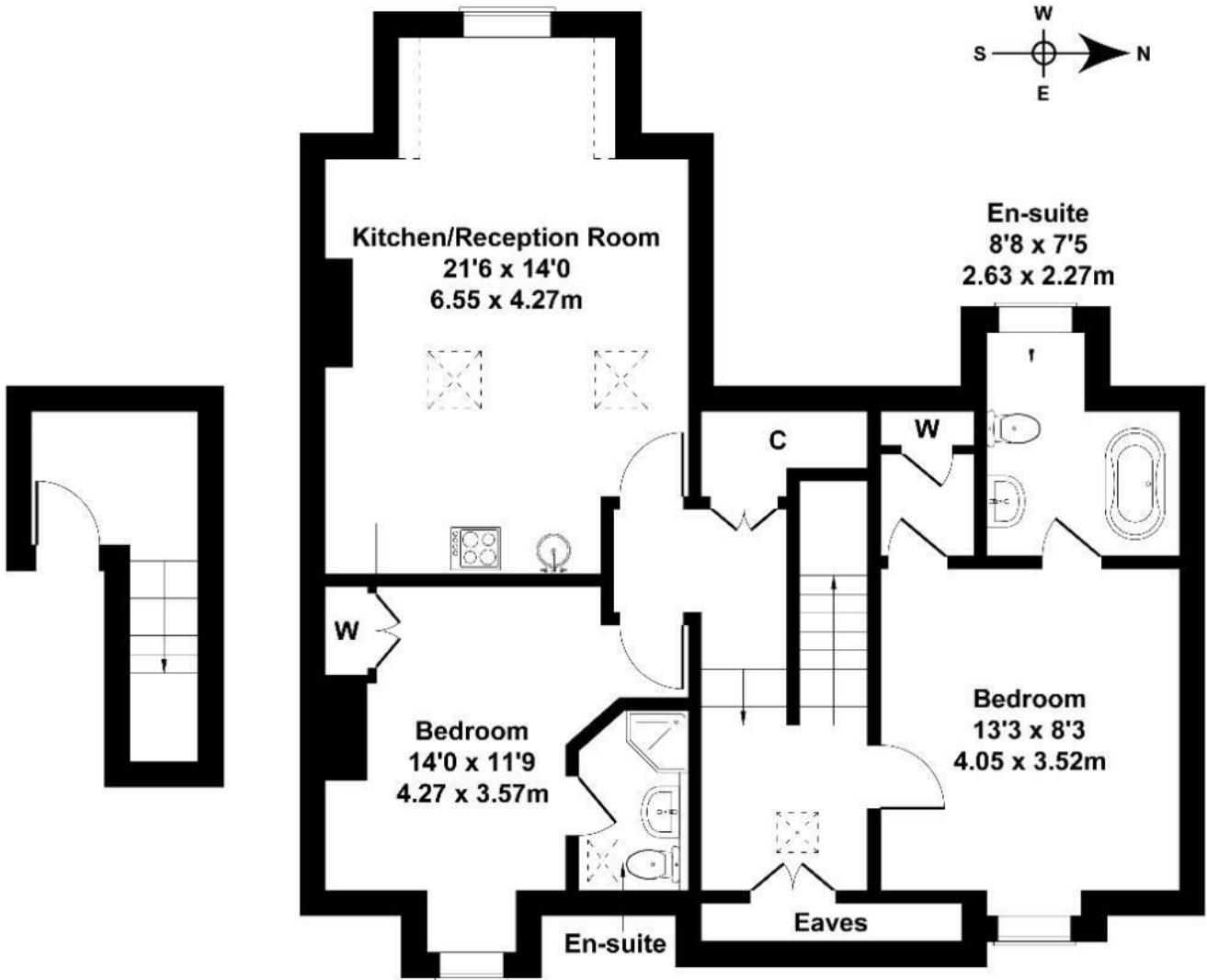
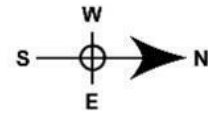
Long Let. This two-bedroom flat and two bathrooms benefit from a modern interior and a great location.

- Available Now
- Two Double Bedrooms
- Two Bathrooms (en-suite)
- Open Plan Kitchen Living Room
- Allocated Parking Space
- Close to transport and amenities

£2,000 Per Month

Newburgh Road

Approximate Gross Internal Area
861 sq ft - 80 sq m



FIRST FLOOR

SECOND FLOOR

Not to Scale. Produced by The Plan Portal 2024
For Illustrative Purposes Only.

Energy Efficiency Rating		
	Current	Potential
<i>Very energy efficient - lower running costs</i>		
(92 plus) A		
(81-91) B		
(69-80) C		
(55-68) D		
(39-54) E		
(21-38) F		
(1-20) G		
<i>Not energy efficient - higher running costs</i>		
England & Wales	EU Directive 2002/91/EC	