



The Park W5

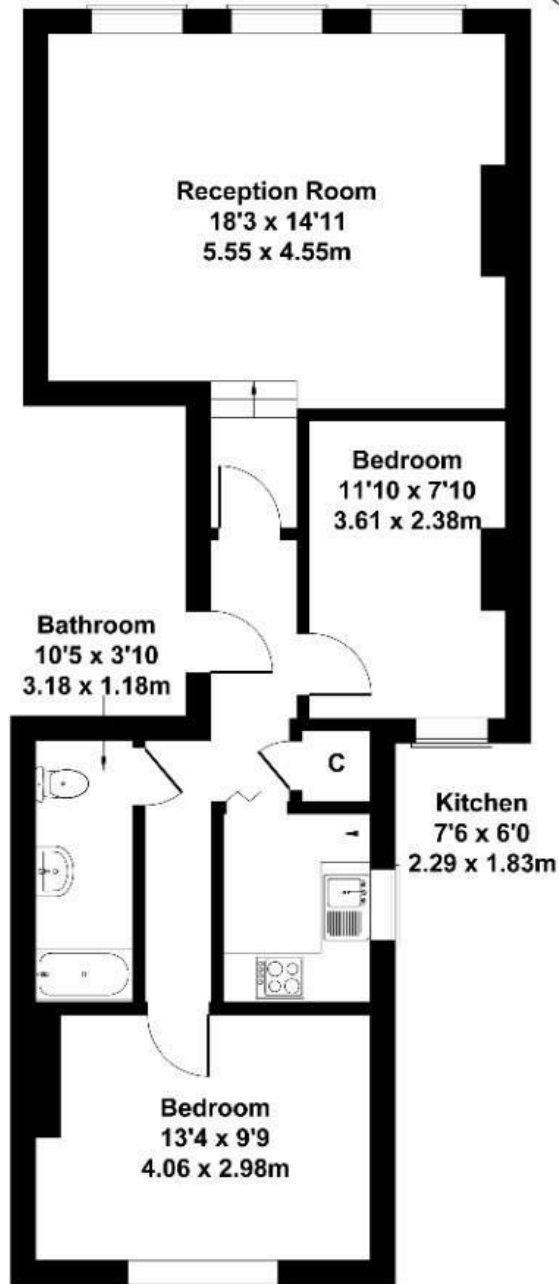
Nestled in a central location, this delightful first-floor flat offers a perfect blend of comfort and convenience. Boasting two spacious double bedrooms, this property is ideal for professionals, couples, or small families seeking a serene living environment.

- Available now
- Sought after location
- Walking distance to Ealing Broadway
- Permit Parking available
- Two double bedrooms
- early viewings advised

£2,399 PCM

The Park

Approximate Gross Internal Area
689 sq ft - 64 sq m



FIRST FLOOR

Not to Scale. Produced by The Plan Portal 2026
For Illustrative Purposes Only.

Energy Efficiency Rating		Current	Potential
Very energy efficient - lower running costs			
(92 plus) A			
(81-91) B			
(69-80) C			79
(55-68) D	63		
(39-54) E			
(21-38) F			
(1-20) G			
Not energy efficient - higher running costs			
England & Wales	EU Directive 2002/91/EC		