



The Park W5

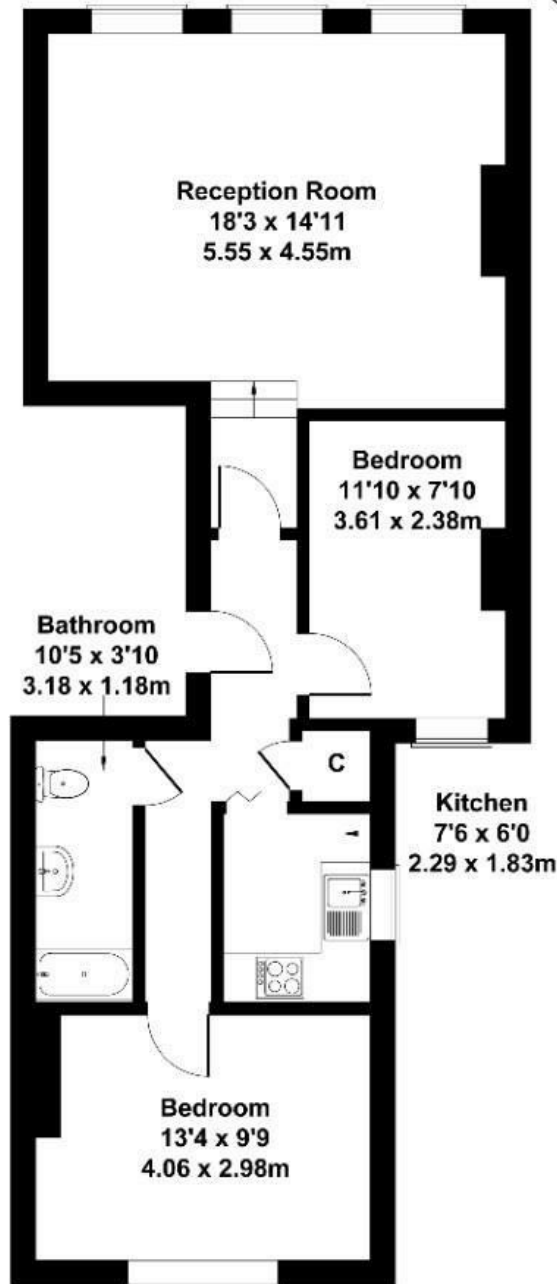
Long Let. Nestled in a central location, this delightful first-floor flat offers a perfect blend of comfort and convenience. Boasting two spacious double bedrooms, this property is ideal for professionals, couples, or small families seeking a serene living environment.

- Available now
- Sought after location
- Walking distance to Ealing Broadway
- Permit Parking available
- Two double bedrooms
- early viewings advised

£2,500 PCM

The Park

Approximate Gross Internal Area
689 sq ft - 64 sq m



FIRST FLOOR

Not to Scale. Produced by The Plan Portal 2026
For Illustrative Purposes Only.

Energy Efficiency Rating		
	Current	Potential
<i>Very energy efficient - lower running costs</i>		
(92 plus) A		
(81-91) B		
(69-80) C		
(55-68) D		
(39-54) E		
(21-38) F		
(1-20) G		
<i>Not energy efficient - higher running costs</i>		
England & Wales	EU Directive 2002/91/EC	