



Corrigan Court, W5

A spacious one-bedroom, one-bathroom apartment located in the heart of Ealing Common, just moments from Ealing Common Underground Station, offering 495 sq ft of well-designed living space.

Corrigan Court presents a contemporary and stylish finish throughout, ideal for modern living.

The property features a bright and airy open-plan reception and kitchen area, enhanced by floor-to-ceiling windows and Juliet balconies that flood the space with natural light.

Additional benefits include lift access, providing both comfort and convenience in a highly sought-after location.

- One double bedroom
- One bathroom
- Long lease (984 years remaining)
- Heart of Ealing Common
- Lift access
- 495 sq ft
- EPC rating B
- Great local amenities

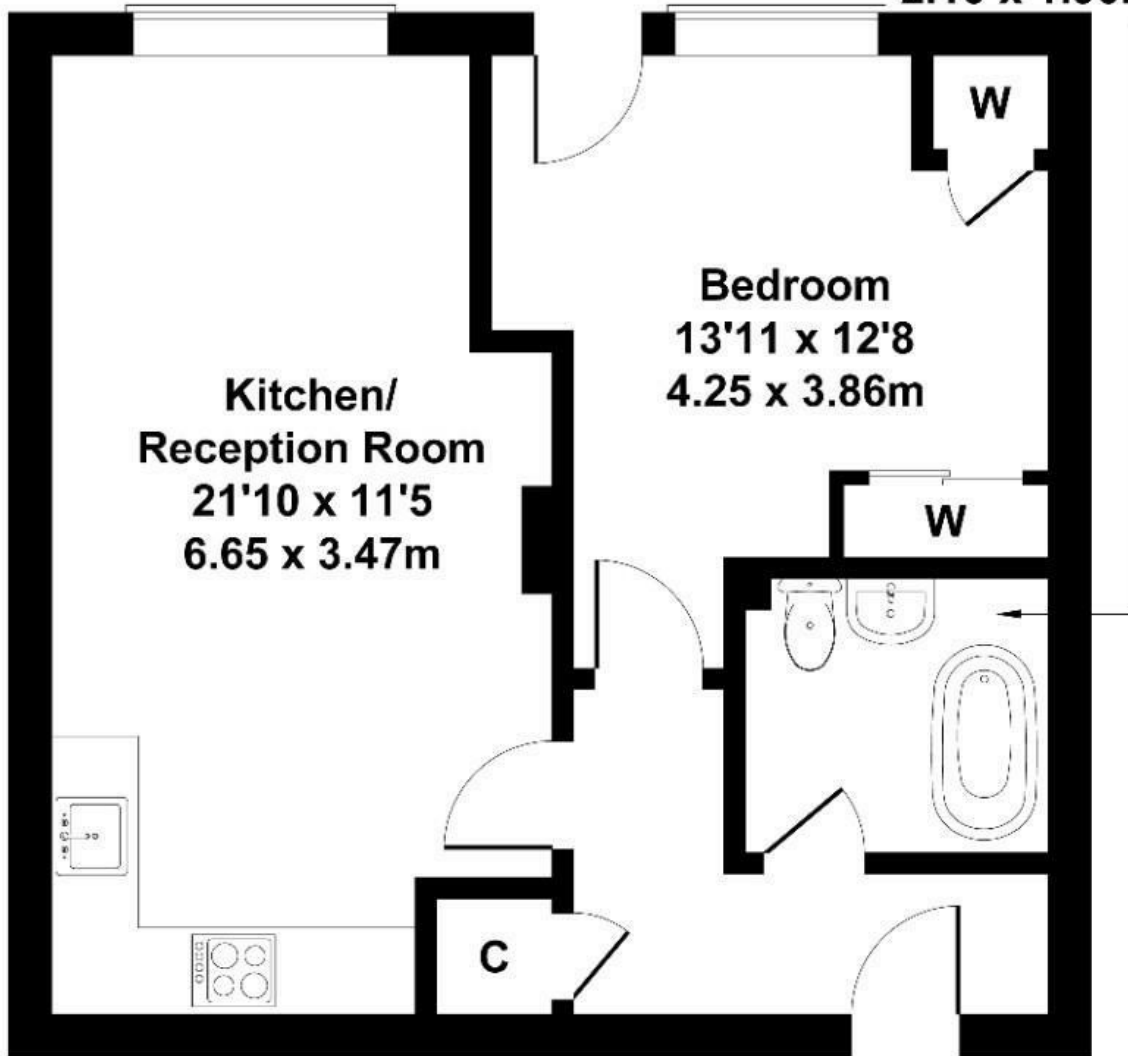
£350,000

Corrigan Court

Approximate Gross Internal Area
495 sq ft - 46 sq m



Bathroom
6'11 x 6'3
2.10 x 1.90m



SECOND FLOOR

Not to Scale. Produced by The Plan Portal 2026
For Illustrative Purposes Only.

Energy Efficiency Rating		Current	Potential
Very energy efficient - lower running costs			
(92 plus) A			
(81-91) B		82	82
(69-80) C			
(55-68) D			
(39-54) E			
(21-38) F			
(1-20) G			
Not energy efficient - higher running costs			
England & Wales	EU Directive 2002/91/EC		