

Bedford Road, W13

A beautifully refurbished two double bedroom Victorian home ideally positioned in the heart of West Ealing, just moments from West Ealing Station and the highly convenient Elizabeth Line, offering fast connections to Ealing Broadway Station and central London.

Finished to an excellent standard throughout, the property offers well-balanced accommodation with two generous reception rooms on the ground floor and a separate fully fitted kitchen, creating a practical and stylish living environment.

Presented in turnkey condition, this home provides excellent internal space for buyers seeking a well-located property in central West Ealing. The loft has already been prepared with flooring and multiple skylights, providing a highly usable space as it stands while also offering significant potential for further extension and enhancement, subject to the usual planning consents.

- Freehold house
- Two double bedrooms
- No chain
- Excellent condition throughout
- Two receptions
- Separate kitchen area
- Short walk to Elizabeth Line
- Useable loft area

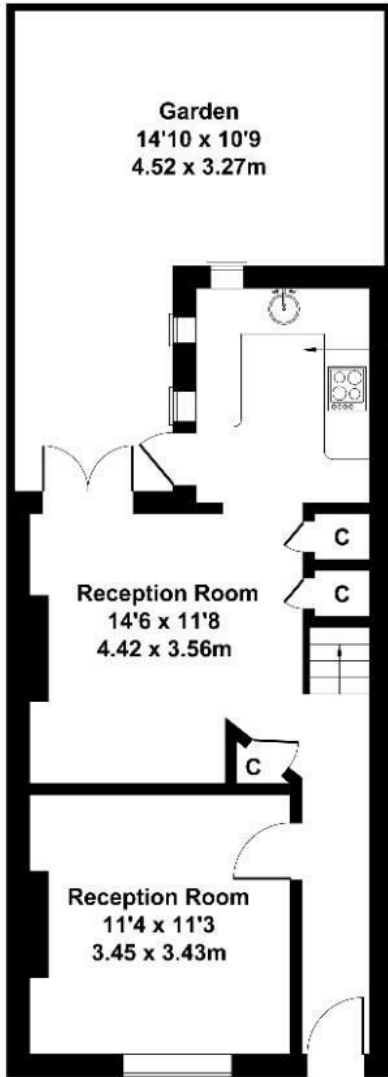
£669,000

Bedford Road

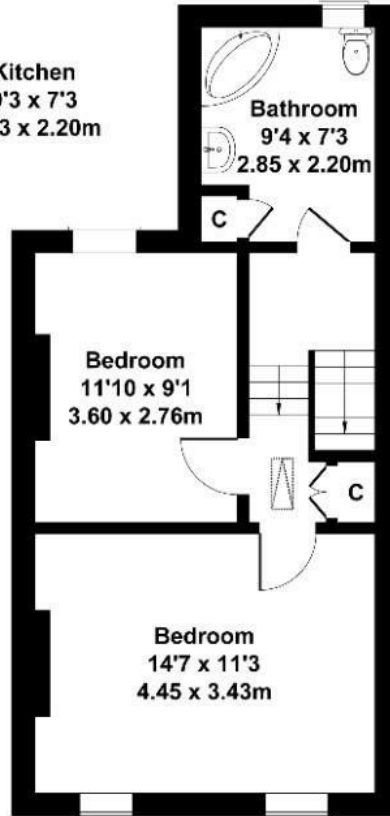
Approximate Gross Internal Area
840 sq ft - 78 sq m

Loft - 156 sq ft - 14.5 sq m

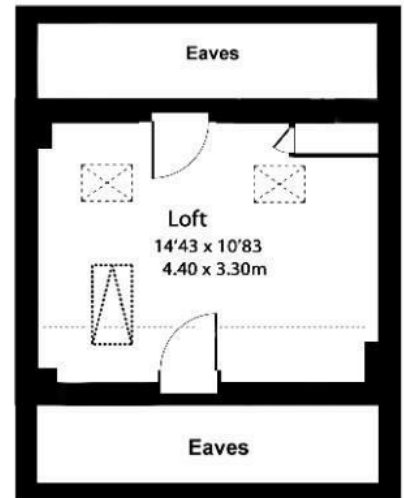
996 sq ft - 92.5 sq m Including Loft



GROUND FLOOR



FIRST FLOOR



Not to Scale. Produced by The Plan Portal 2025
For Illustrative Purposes Only.

Energy Efficiency Rating		Current	Potential
Very energy efficient - lower running costs			
(92 plus) A			
(81-91) B			86
(69-80) C			
(55-68) D		67	
(39-54) E			
(21-38) F			
(1-20) G			
Not energy efficient - higher running costs			
England & Wales		EU Directive 2002/91/EC	