



Burlington Mews, W3

This bright two-bedroom flat is set within an attractive period building on the highly sought-after Churchfield Road.

The property is filled with natural light and comprises a generous reception room, a separate kitchen, and a well-proportioned family bathroom.

The flat further benefits from a share of freehold and low service charges, making it an excellent opportunity for both homeowners and investors alike.

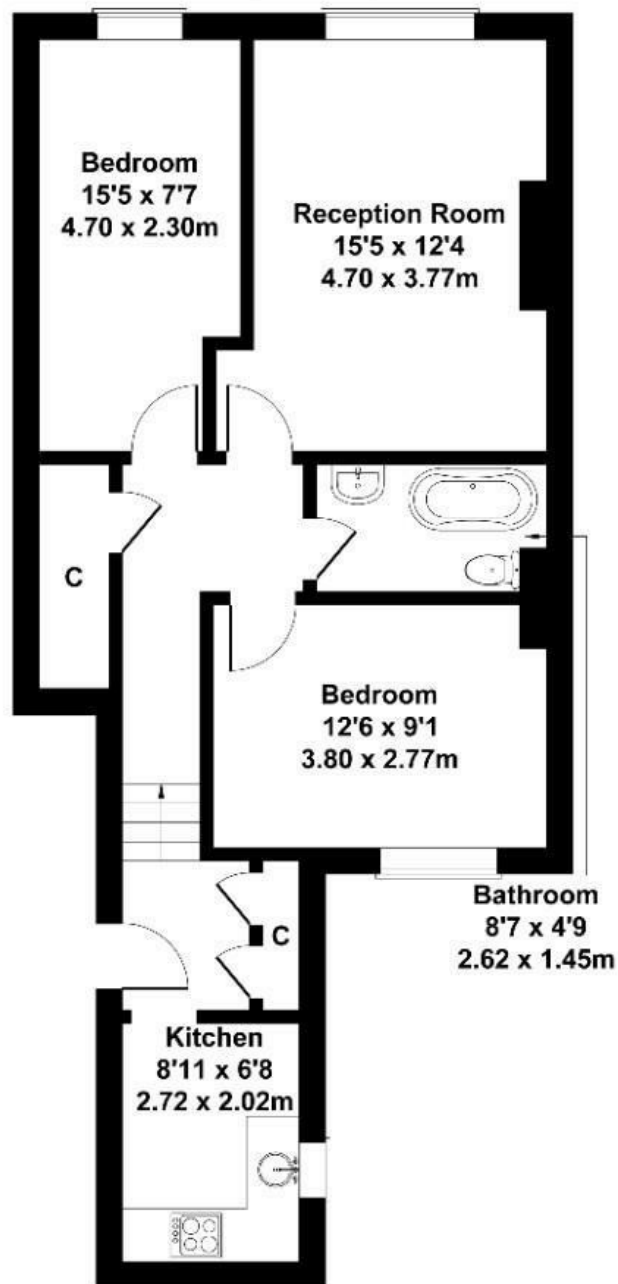
Offered with no onward chain.

£449,950

- Two-bedrooms
- Separate kitchen
- Share of freehold
- Low service charges
- Period building
- Moments from public transports
- Close to amenities
- Sought-after area
- Vacant
- No onward chain

Burlington Mews

Approximate Gross Internal Area
657 sq ft - 61 sq m



SECOND FLOOR

Not to Scale. Produced by The Plan Portal 2026
For Illustrative Purposes Only.

Energy Efficiency Rating		
	Current	Potential
Very energy efficient - lower running costs		
(92 plus) A		
(81-91) B		
(69-80) C		79
(55-68) D	61	
(39-54) E		
(21-38) F		
(1-20) G		
Not energy efficient - higher running costs		
England & Wales	EU Directive 2002/91/EC	