

## Cumberland Park, W3

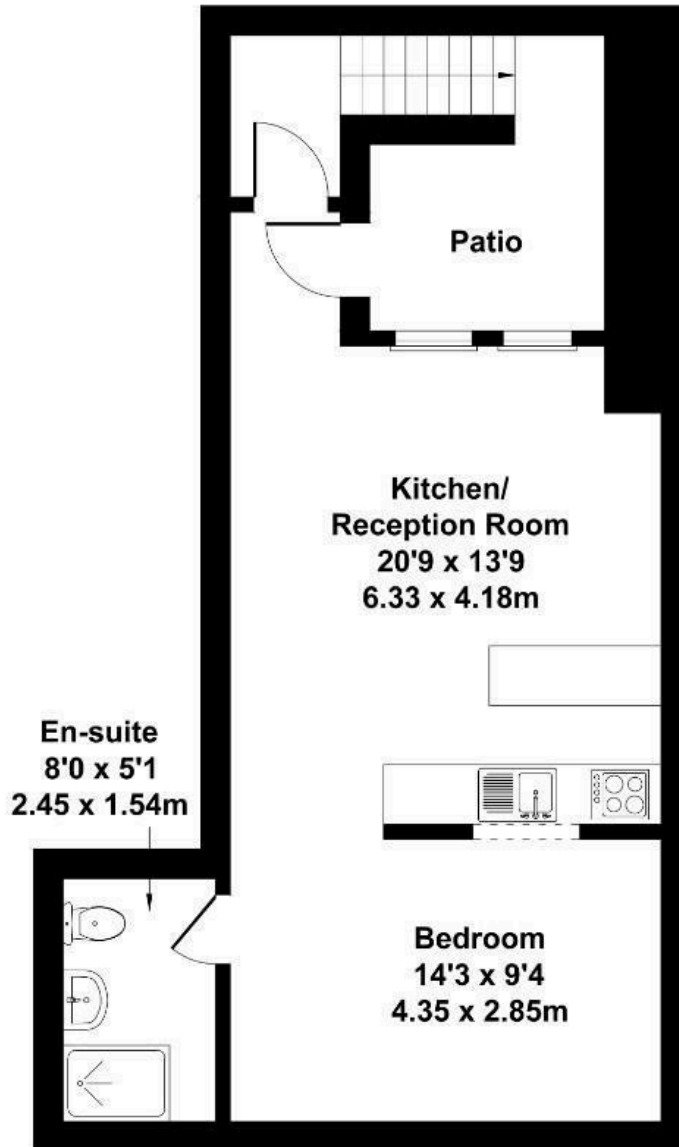
LONG LET: Located on the lower ground floor of a contemporary new build in Cumberland Park, this stylish studio flat offers well-planned living space with a private patio.

- Open-plan studio layout
- Integrated modern kitchen
- Stylish shower room
- Private patio space
- Near Acton Central & Elizabeth Line
- Close to shops, cafes & parks

£1,797 Per Month

# Cumberland Park

Approximate Gross Internal Area  
4.63 sq ft - 43 sq m  
(Excluding Patio)



## LOWER GROUND FLOOR

Not to Scale. Produced by The Plan Portal 2025  
For Illustrative Purposes Only.

Energy Efficiency Rating		Current	Potential
Very energy efficient - lower running costs			
(92 plus) <b>A</b>			
(81-91) <b>B</b>			
(69-80) <b>C</b>		72	72
(55-68) <b>D</b>			
(39-54) <b>E</b>			
(21-38) <b>F</b>			
(1-20) <b>G</b>			
Not energy efficient - higher running costs			
<b>England &amp; Wales</b>	EU Directive 2002/91/EC		