



## Fordhook Avenue, W5

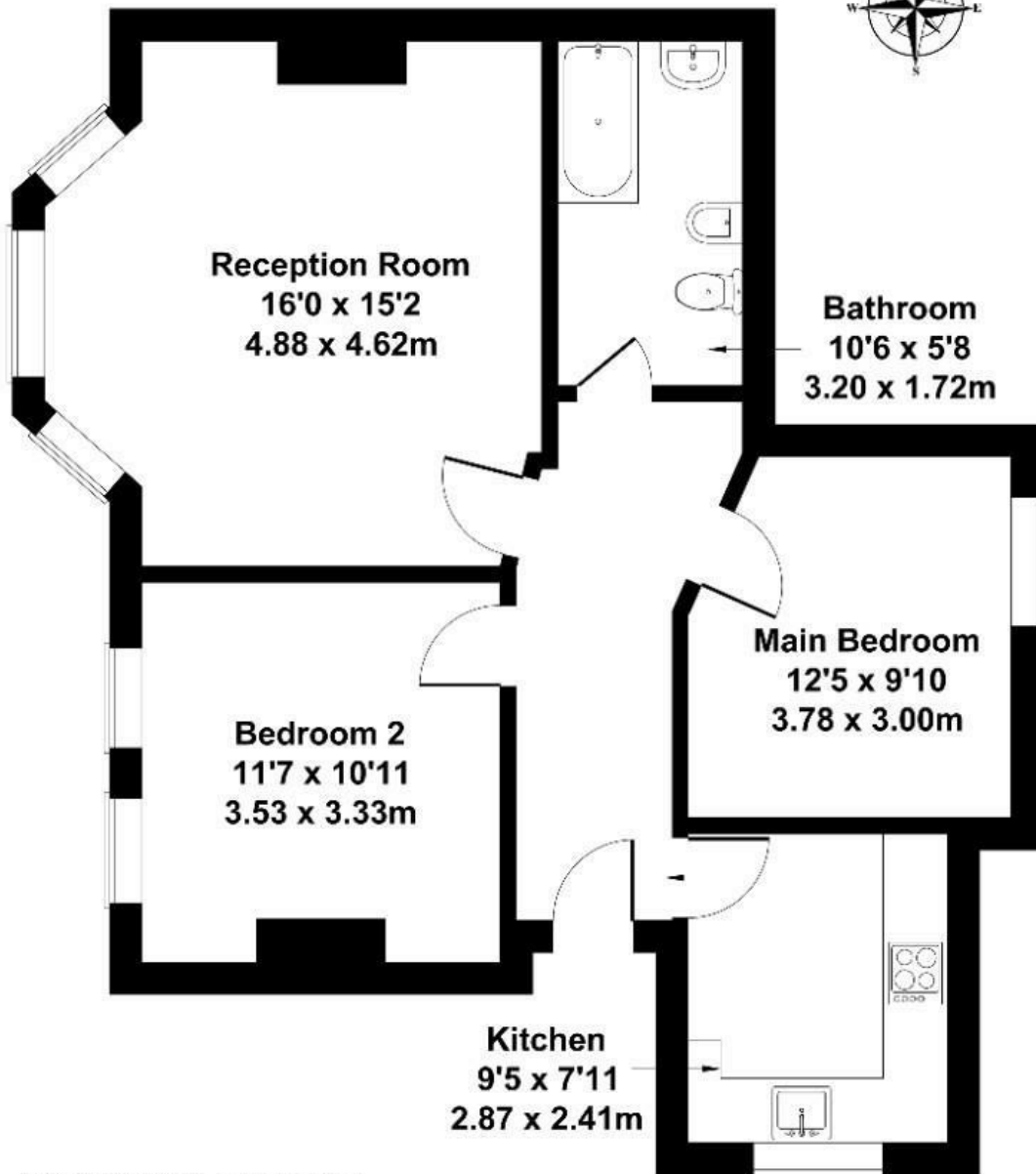
LONG LET. This two-bedroom property is situated in the heart of Ealing Common offering great living close to local transport links and amenities.

- Parking
- Spacious garden
- Two bedrooms
- moments from Ealing Common tube station
- Close to amenities

£2,300 Per Month

# Fordhook Avenue

Approximate Gross Internal Area  
689 sq ft - 64 sq m



## GROUND FLOOR

Not to Scale. Produced by The Plan Portal 2026  
For Illustrative Purposes Only.

Energy Efficiency Rating		
	Current	Potential
Very energy efficient - lower running costs		
(92 plus) A		
(81-91) B		
(69-80) C		
(55-68) D		
(39-54) E		
(21-38) F		
(1-20) G		
Not energy efficient - higher running costs		
England & Wales	EU Directive 2002/91/EC	