



Hanger Lane, W5

Located just a short walk from both Ealing Common and Ealing Broadway, this spacious three-bedroom garden flat extends to over 1,000 sq ft and offers generous living accommodation throughout.

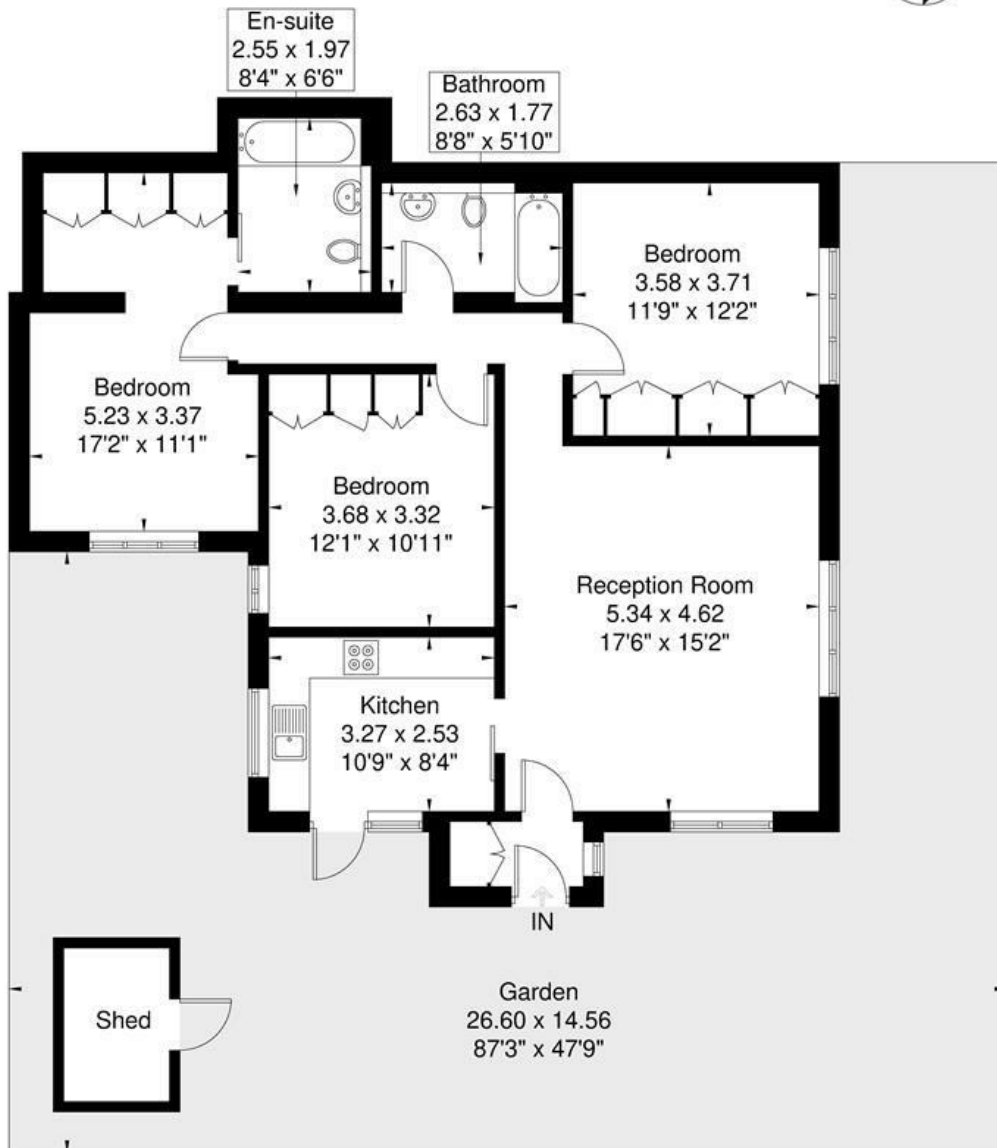
The property features three well-proportioned double bedrooms, a large reception room measuring an impressive 17'6 x 15'2, a separate kitchen, and two family-sized bathrooms. Additional benefits include residents parking, a private garden ideal for family life and entertaining, a long lease, no onward chain, and potential to extend subject to the usual planning consents.

£760,000

- Period conversion
- Three double bedrooms
- Over 1000 sq foot.
- Long lease
- Massive private garden
- Potential to extend STPP
- Private entrance
- No chain
- Two bathrooms
- Short distance to Ealing Broadway & Ealing Common

Hanger Lane

Approximate Gross Internal Area = 97.8 sq m / 1052 sq ft



Ground Floor

Although every attempt has been made to ensure accuracy, all measurements are approximate.
The floorplan is for illustrative purposes only and not to scale.

© www.perspective.co.uk

