



Woodfield Road, London

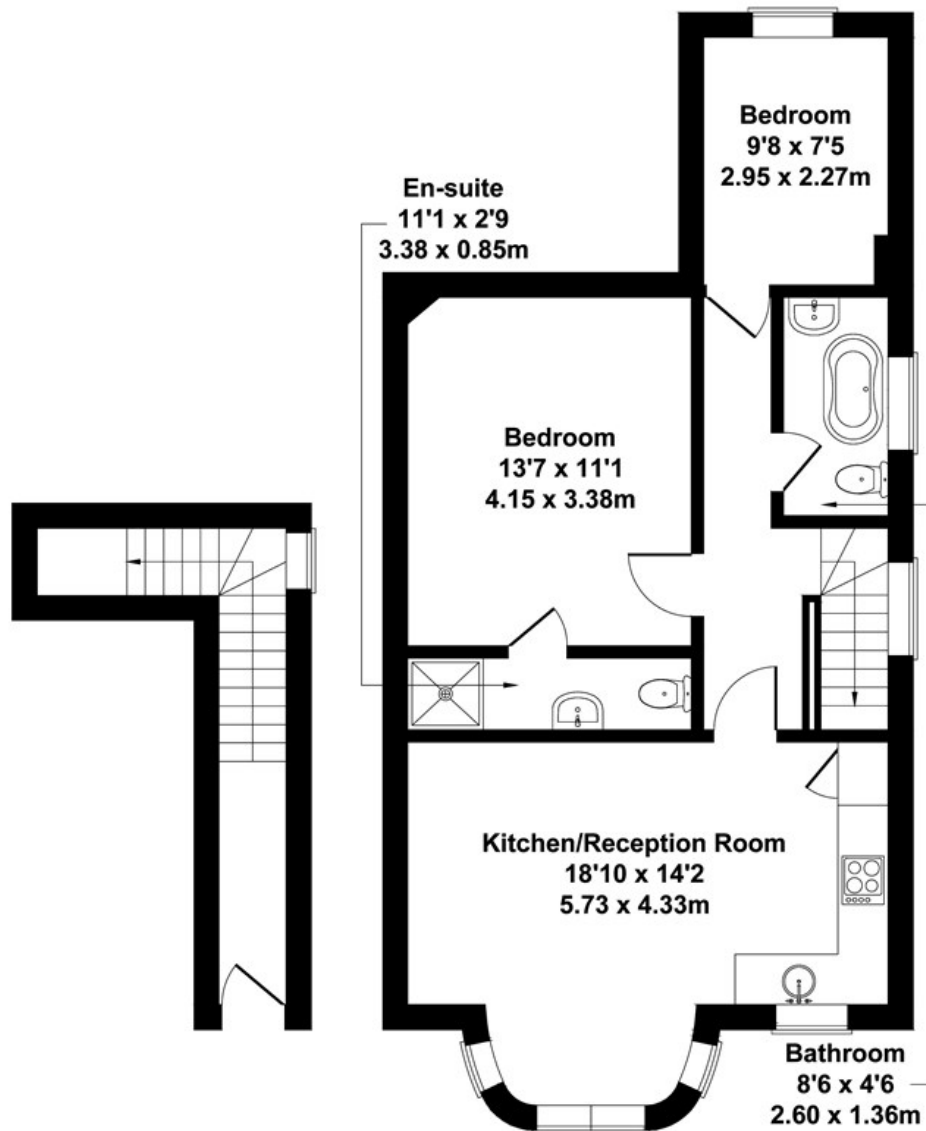
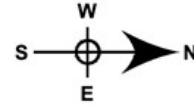
LONG LET. This newly refurbished two double bedroom, two bathroom apartment features modern decor and is ideally located between Ealing Broadway and Pitshanger Lane.

- DOUBLE BEDROOMS
- TWO BATHROOMS
- MODERN
- NEWLY REFURBISHED
- OFF-STREET PARKING
- GREAT LOCATION
- COUNCIL TAX BAND - D
- EPC RATING - C

£2,300 PCM

Woodfield Road

Approximate Gross Internal Area
689 sq ft - 64 sq m



GROUND FLOOR

FIRST FLOOR

Not to Scale. Produced by The Plan Portal 2021
For Illustrative Purposes Only.

Energy Efficiency Rating		
	Current	Potential
Very energy efficient - lower running costs		
(92 plus) A		
(81-91) B		
(69-80) C		
(55-68) D		
(39-54) E		
(21-38) F		
(1-20) G		
Not energy efficient - higher running costs		
England & Wales	EU Directive 2002/91/EC	