



Gloucester Road, W3

Long Let. A two-bedroom apartment spanning 1000 sq. ft in lateral space, spread across the ground floor of this imposing residence nestled in on this sought-after cul-de-sac location in the heart of Acton.

This property showcases designer style living behind grand impressive façade. It also boasts a private court yard.

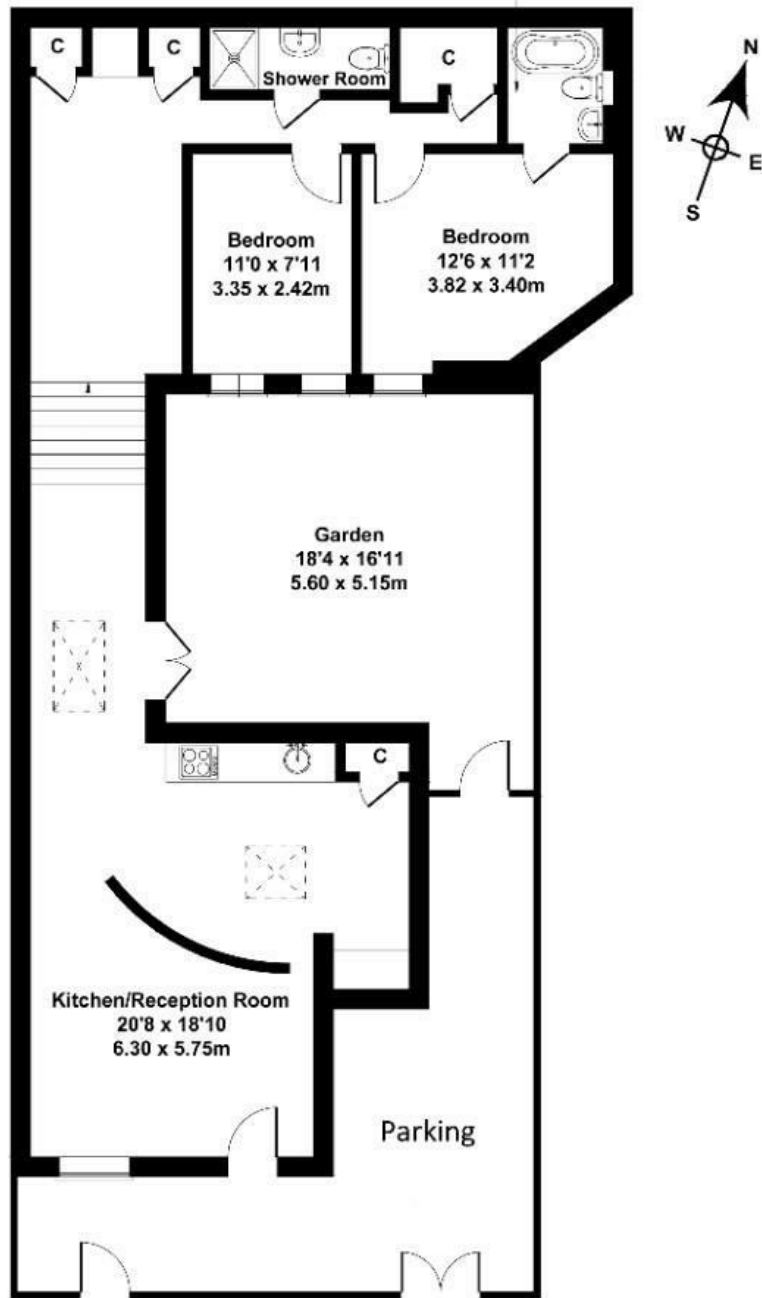
- Two bathrooms (one en-suite)
- Two bedrooms
- Private courtyard
- Luxury fitted kitchen
- Wood flooring
- Off street parking

£2,900

Gloucester Rd

Approximate Gross Internal Area
947 sq ft - 88 sq m

En-suite
6'11 x 5'3
2.10 x 1.60m



Not to Scale. Produced by The Plan Portal 2024
For Illustrative Purposes Only.

Energy Efficiency Rating		
	Current	Potential
Very energy efficient - lower running costs		
(92 plus) A		
(81-91) B		
(69-80) C		
(55-68) D		
(39-54) E		
(21-38) F		
(1-20) G		
Not energy efficient - higher running costs		
England & Wales	EU Directive 2002/91/EC	