



## Eaton Rise, W5

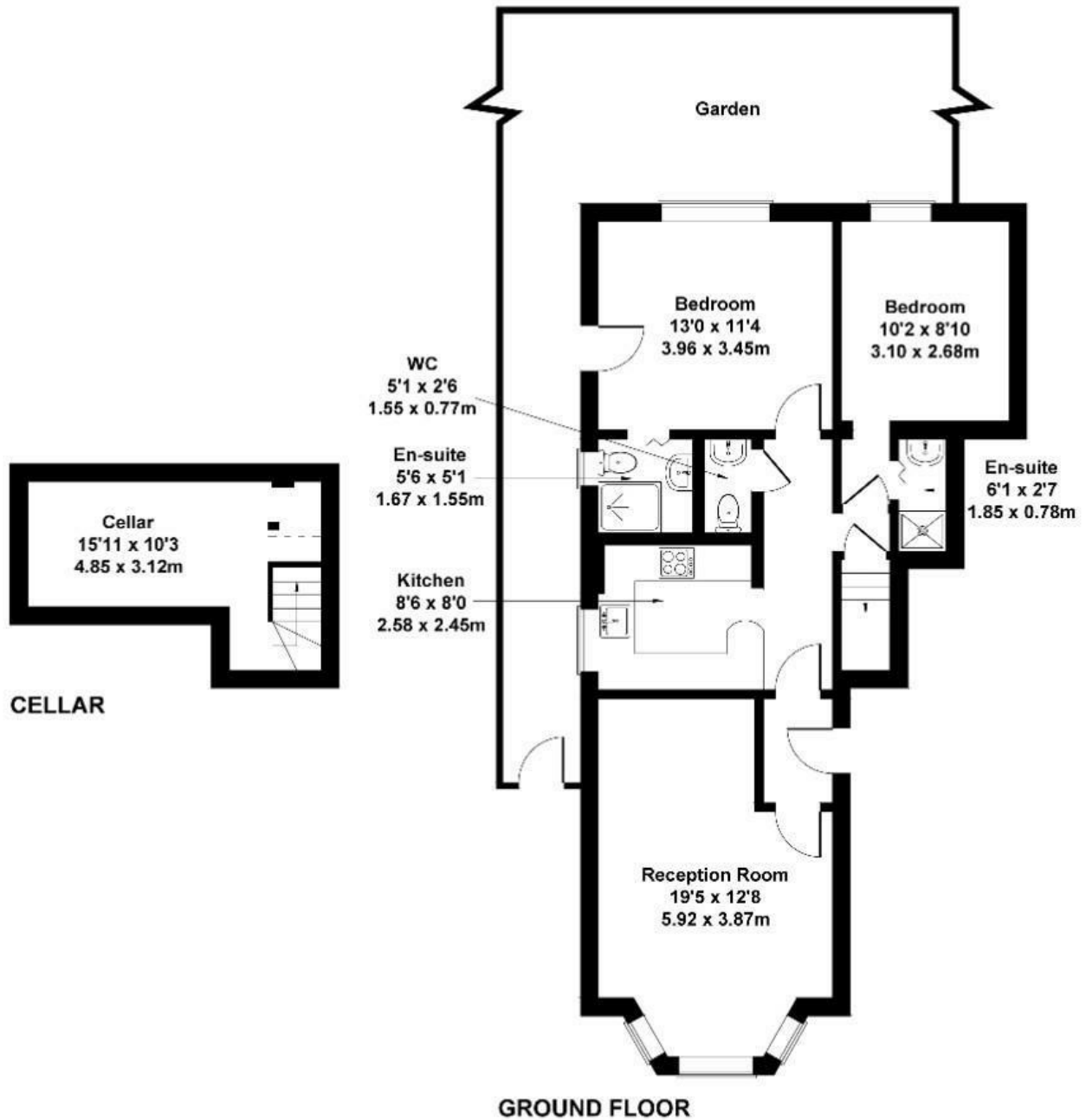
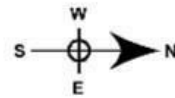
A beautifully presented and exceptionally spacious two-bedroom, two-bathroom ground-floor apartment set within an impressive Victorian building on one of Ealing Broadway's most sought-after residential roads. Finished to a superb standard throughout, this contemporary home offers a wonderfully bright interior, enhanced by high ceilings, generous proportions and excellent natural light.

- Victorian period conversion
- Ground floor
- Two bedrooms
- Off street parking
- Two bathrooms
- Share of freehold
- Additional room for home office or storage
- Private patio
- Excellent central Ealing Broadway location
- Excellent condition throughout

£625,000

# Eaton Rise

Approximate Gross Internal Area  
850 sq ft - 79 sq m  
(Including Cellar)



Not to Scale. Produced by The Plan Portal 2024  
For Illustrative Purposes Only.

Energy Efficiency Rating		
	Current	Potential
Very energy efficient - lower running costs		
(92 plus) <b>A</b>		
(81-91) <b>B</b>		
(69-80) <b>C</b>		
(55-68) <b>D</b>		
(39-54) <b>E</b>		
(21-38) <b>F</b>		
(1-20) <b>G</b>		
Not energy efficient - higher running costs		
<b>England &amp; Wales</b>	EU Directive 2002/91/EC 