



Rosemont Road, W3

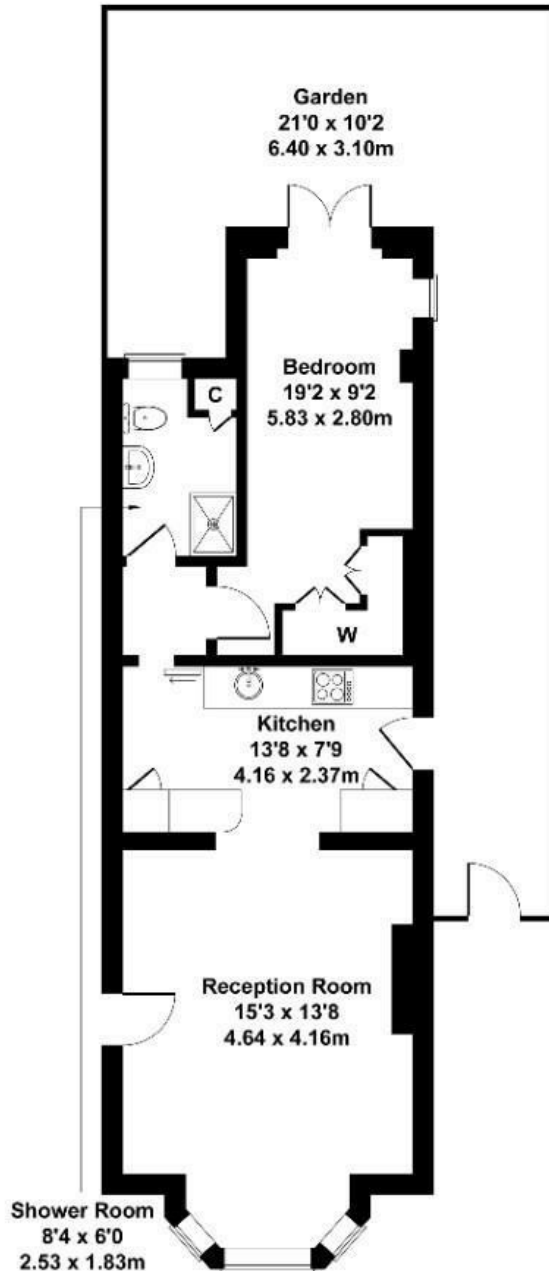
Long Let. A substantial one-bedroom garden flat located on the ground floor of this imposing period conversion which is available for immediate occupation.

- Available now
- Patio garden
- Great for transport links
- Close to local amenities
- Part furnished
- Early viewing advised

£2,195

Rosemont Road

Approximate Gross Internal Area
581 sq ft - 54 sq m



GROUND FLOOR

Not to Scale. Produced by The Plan Portal 2025
For Illustrative Purposes Only.

Energy Efficiency Rating		
	Current	Potential
Very energy efficient - lower running costs		
(92 plus) A		
(81-91) B		
(69-80) C		
(55-68) D		
(39-54) E		
(21-38) F		
(1-20) G		
Not energy efficient - higher running costs		
England & Wales	EU Directive 2002/91/EC	