



Eaton Rise, W5

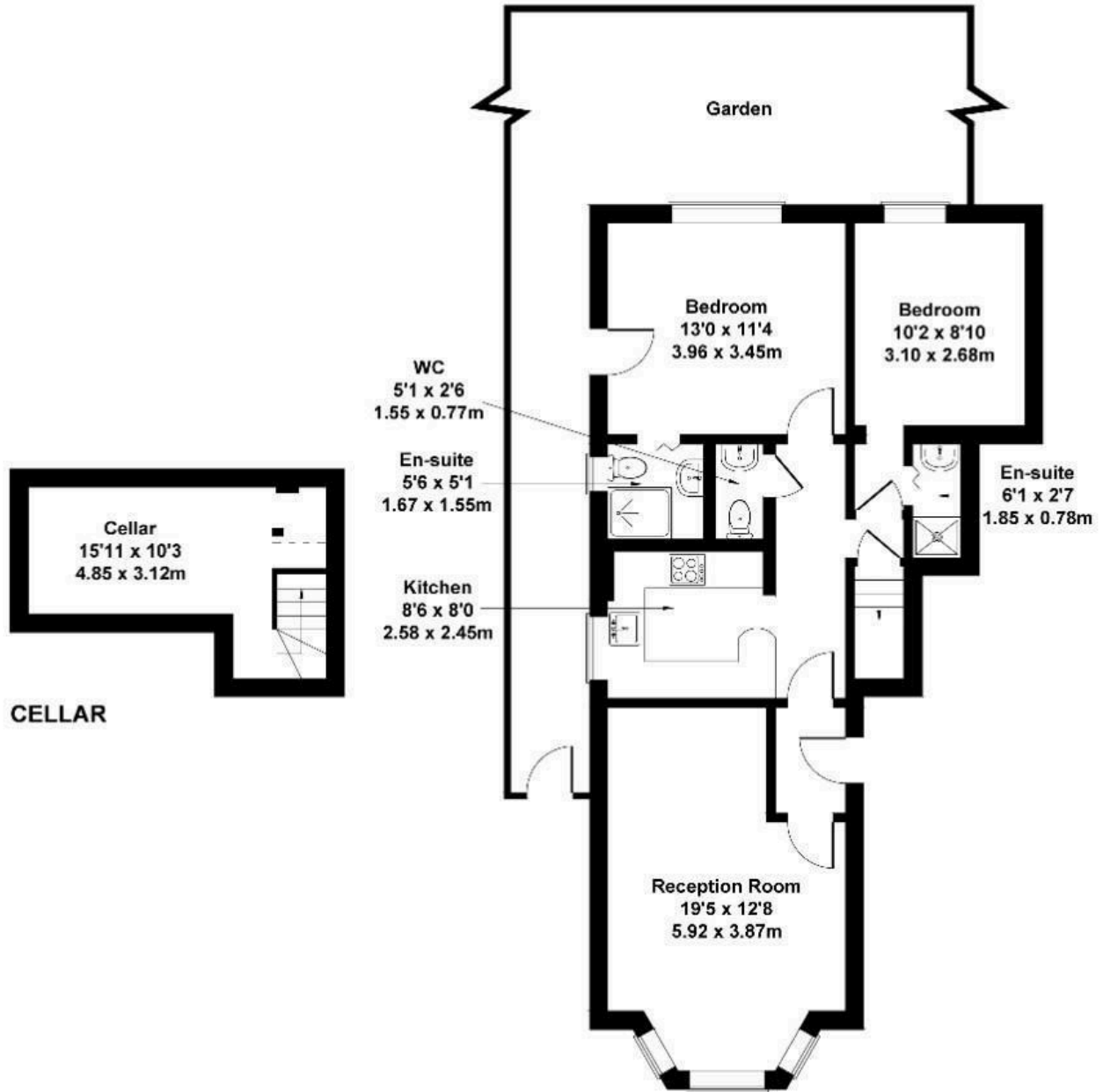
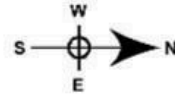
A beautifully presented and exceptionally spacious two-bedroom, two-bathroom ground-floor apartment set within an impressive Victorian building on one of Ealing Broadway's most sought-after residential roads. Finished to a superb standard throughout, this contemporary home offers a wonderfully bright interior, enhanced by high ceilings, generous proportions and excellent natural light.

- Victorian period conversion
- Ground floor
- Two bedrooms
- Off street parking
- Two bathrooms
- Share of freehold
- Additional room for home office or storage
- Private patio
- Excellent central Ealing Broadway location
- Excellent condition throughout

£625,000

Eaton Rise

Approximate Gross Internal Area
850 sq ft - 79 sq m
(Including Cellar)



GROUND FLOOR

Not to Scale. Produced by The Plan Portal 2024
For Illustrative Purposes Only.

Energy Efficiency Rating		
	Current	Potential
<i>Very energy efficient - lower running costs</i>		
(92 plus) A		
(81-91) B		
(69-80) C		
(55-68) D	68	75
(39-54) E		
(21-38) F		
(1-20) G		
<i>Not energy efficient - higher running costs</i>		
England & Wales	EU Directive 2002/91/EC	