



Bowes Road, W3

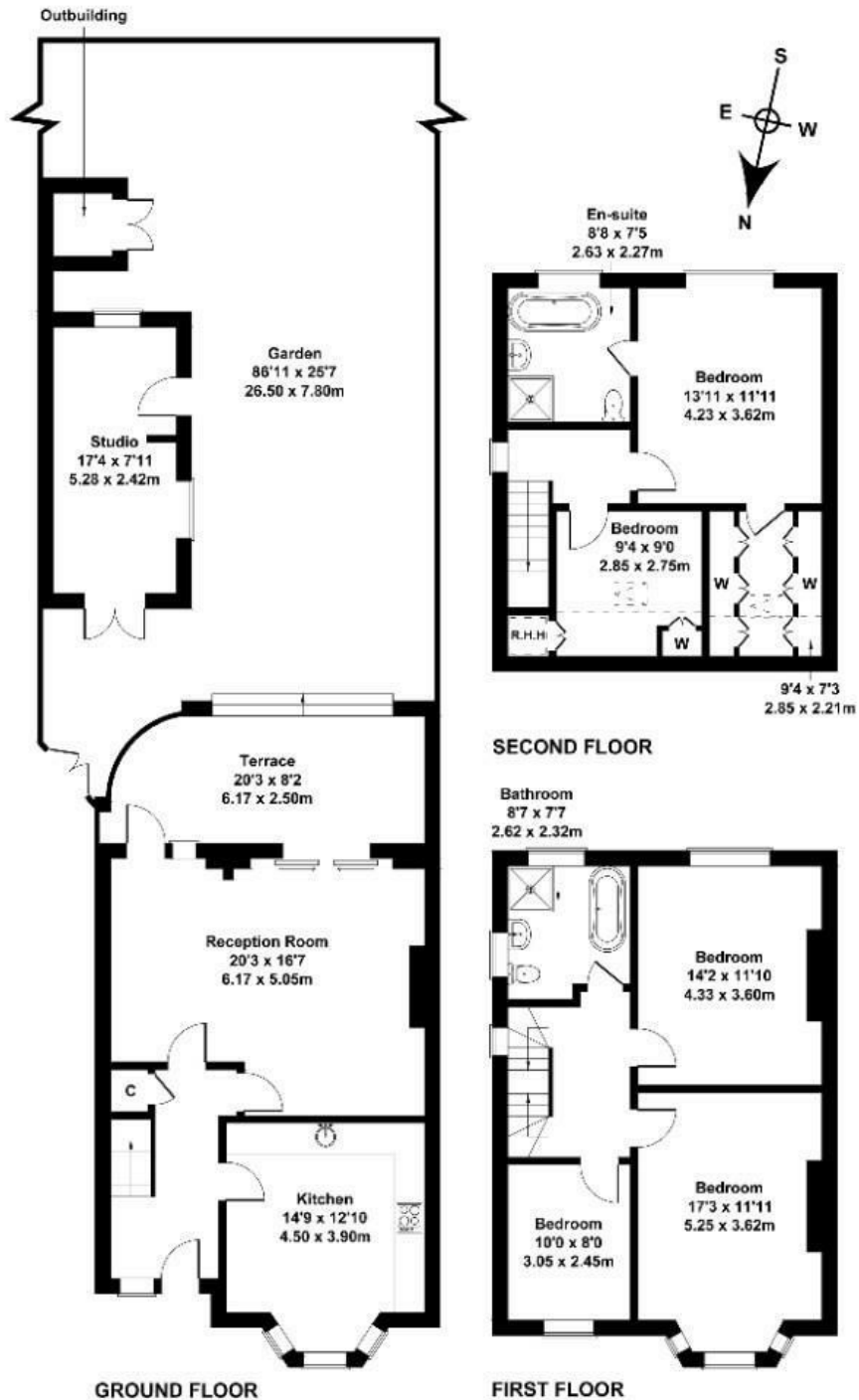
Long Let. Spacious five-bedroom semi-detached house to rent in Acton, W3, offering flexible family living with a large reception room, separate eat-in kitchen, two bathrooms including en-suite, private rear garden with outbuilding and off-street parking. Ideally located on Bowes Road within walking distance of local shops and East Acton Central Line station, providing fast access into Central London. Available immediately, this well-located West London family home is ideal for tenants seeking space, convenience and excellent transport links.

£4,050 Per Month

- Five bedroom semi-detached house
- Two bathrooms (including en-suite)
- Large reception room
- Separate eat-in kitchen
- Private garden with versatile outbuilding
- Off-street parking
- Walking distance to shops & transport
- East Acton Central Line nearby
- Acton W3 location
- Available now | Long let

Bowes Road

Approximate Gross Internal Area
1679 sq ft - 156 sq m



Not to Scale. Produced by The Plan Portal 2024
For Illustrative Purposes Only.

Energy Efficiency Rating		
	Current	Potential
Very energy efficient - lower running costs		
(92 plus) A		
(81-91) B		
(69-80) C		
(55-68) D		
(39-54) E		
(21-38) F		
(1-20) G		
Not energy efficient - higher running costs		
England & Wales	EU Directive 2002/91/EC	