



Twyford Crescent, W3

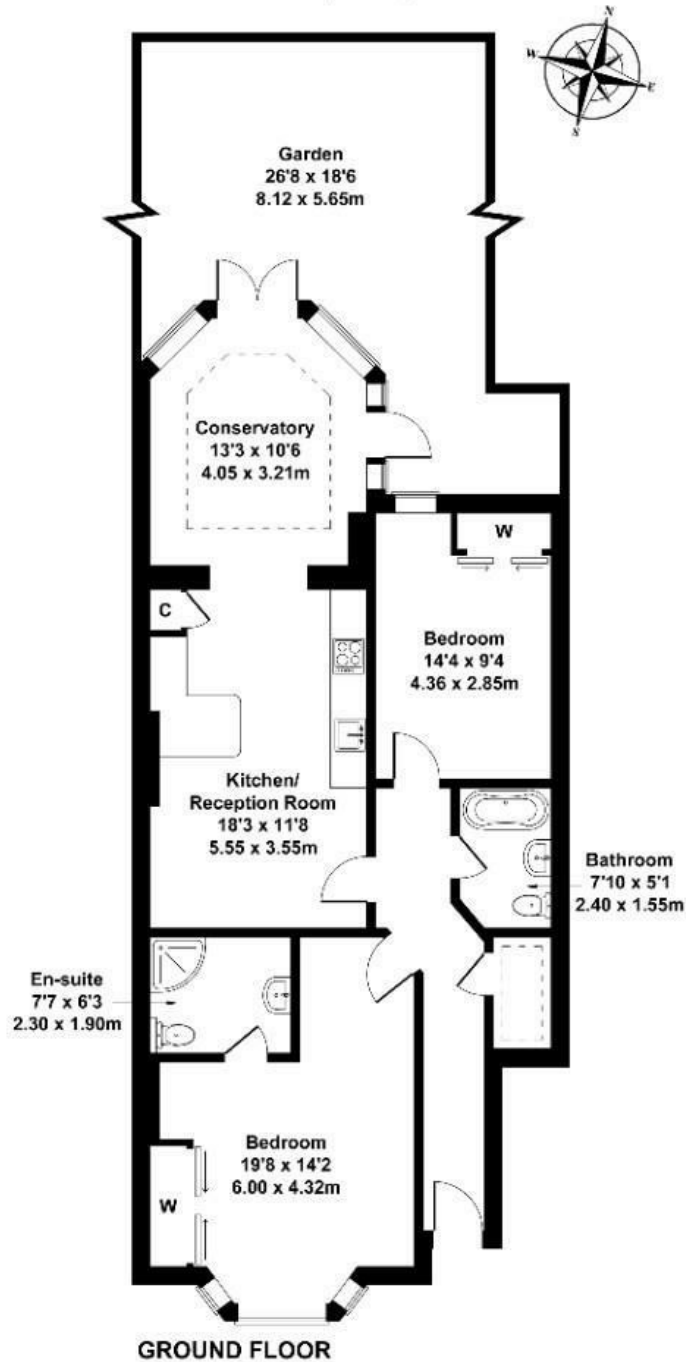
LONG LET. Presented to an exceptional standard, repainted throughout this two double bedroom, two bathroom apartment boasts stunning interiors with a delightful private garden.

- TWO DOUBLE BEDROOMS
- TWO BATHROOMS
- PRIVATE GARDEN
- CLOSE TO AMENITIES
- CLOSE TO TRANSPORT LINKS
- RECENTLY REDECORATED

£2,223 Per Month

Twyford Crescent

Approximate Gross Internal Area
947 sq ft - 88 sq m



Not to Scale. Produced by The Plan Portal 2025
For Illustrative Purposes Only.

Energy Efficiency Rating		
	Current	Potential
Very energy efficient - lower running costs		
(92 plus) A		
(81-91) B		
(69-80) C		
(55-68) D		
(39-54) E		
(21-38) F		
(1-20) G		
Not energy efficient - higher running costs		
England & Wales	EU Directive 2002/91/EC	