



The Grove, W5

Situated in a imposing period building is this beautiful 657 sq ft two-bedroom garden flat located moments from Ealing Broadway centre.

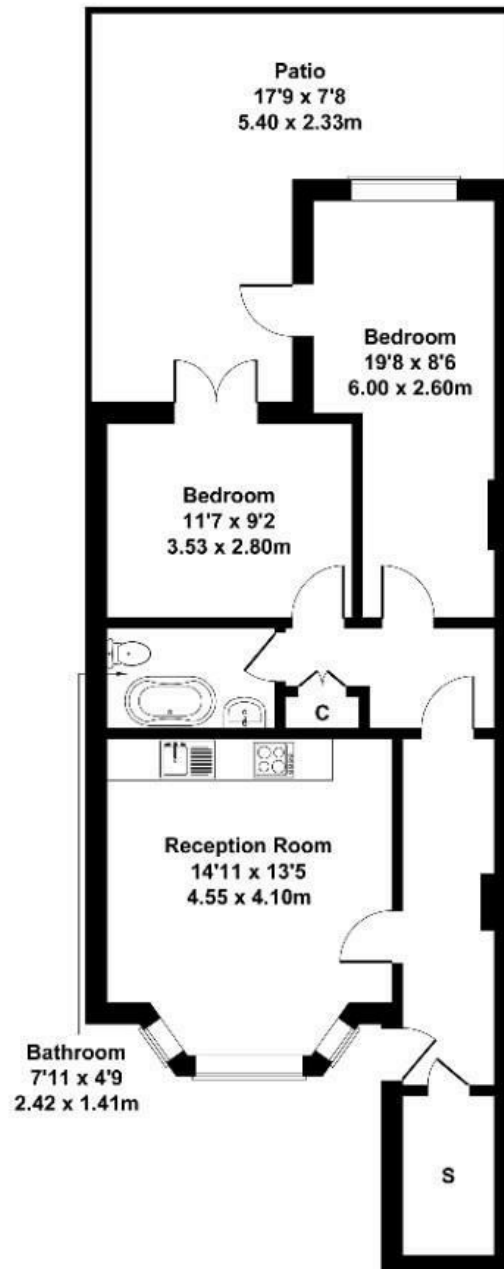
Located in the section of The Grove between the no entry for cars at Ealing Green and the junction with Windsor Rd, you are set on a pretty tree-lined road with a wealth of great dining, drinking and social establishments in your immediate vicinity.

- SOLD BY GO VIEW
- Excellent Condition
- Period Conversion
- Prime Location
- Short Walk to Ealing Broadway
- Private Patio

£500,000

The Grove

Approximate Gross Internal Area
657 sq ft - 61 sq m



LOWER GROUND FLOOR

Not to Scale. Produced by The Plan Portal 2025
For Illustrative Purposes Only.

Energy Efficiency Rating		
	Current	Potential
Very energy efficient - lower running costs		
(92 plus) A		
(81-91) B		
(69-80) C		
(55-68) D	68	77
(39-54) E		
(21-38) F		
(1-20) G		
Not energy efficient - higher running costs		
England & Wales	EU Directive 2002/91/EC	