



Cowley Road, W3

Set across the third and fourth floors of the iconic Issigonis House, this exceptional apartment has been creatively designed and remodelled to showcase light, volume, and contemporary style.

At the heart of the home is the open-plan kitchen and dining area, defined by soaring floor-to-ceiling windows that frame sweeping views across West London.

Above, the dramatic mezzanine reception room offers a stylish space to relax or entertain, while maintaining the apartment's impressive sense of scale. Two well-proportioned bedrooms and a sleek, modern bathroom suite complete this one-of-a-kind home.

£535,000

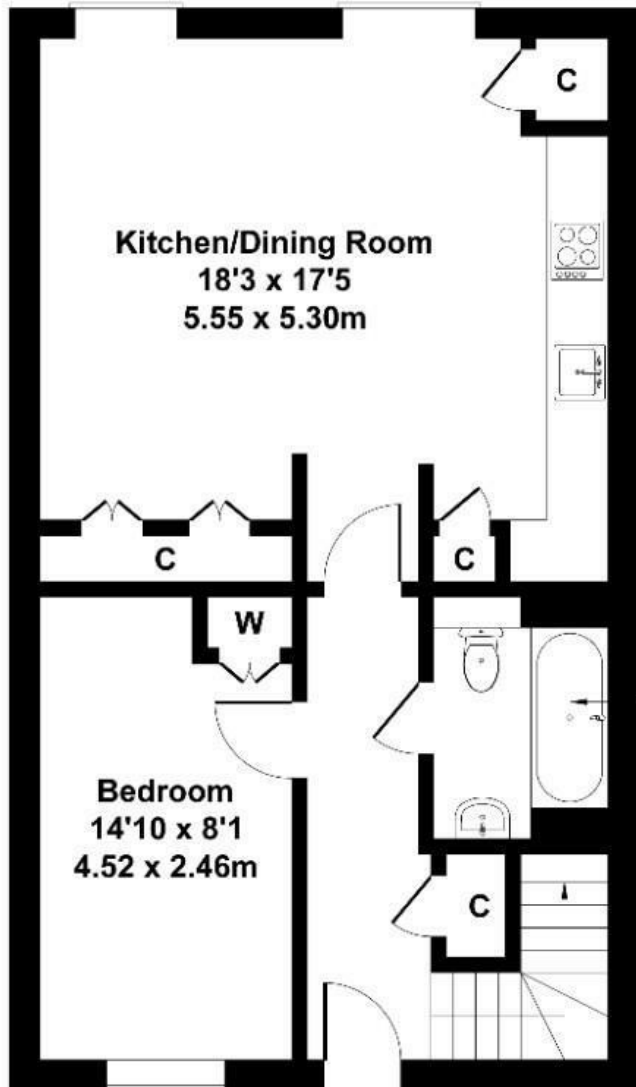
- Purpose built 2008
- Two double bedrooms
- Split level over 3rd and 4th floor
- Siberian oak parquet flooring
- Stylish family bathroom
- Loft-style design with double-height ceilings
- Open-plan designer kitchen & dining area
- Touching a 1000 sq ft
- High spec appliances like Miele & Bosch
- Close to transport links

Issigonis House

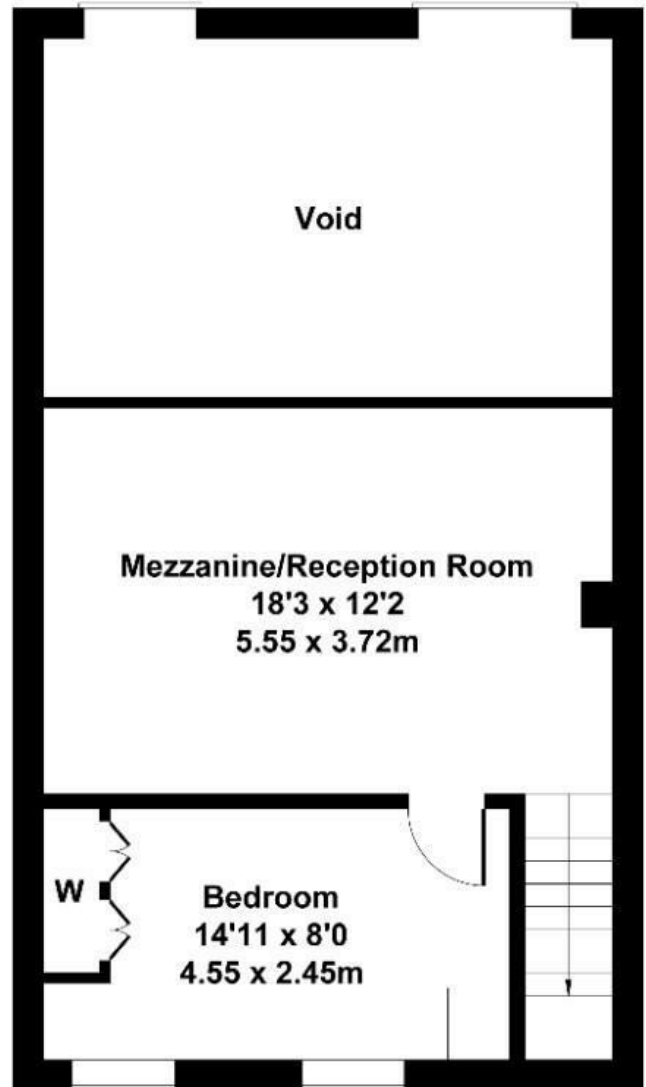
Approximate Gross Internal Area
980 sq ft - 91 sq m
(Excluding Void)



Bathroom
7'9 x 5'7
2.36 x 1.70m



THIRD FLOOR



FOURTH FLOOR

Not to Scale. Produced by The Plan Portal 2025
For Illustrative Purposes Only.

Energy Efficiency Rating		
	Current	Potential
Very energy efficient - lower running costs		
(92 plus) A		
(81-91) B		
(69-80) C		
(55-68) D		
(39-54) E		
(21-38) F		
(1-20) G		
Not energy efficient - higher running costs		
England & Wales	EU Directive 2002/91/EC	