

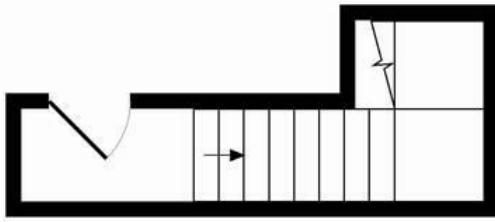


## Churchfield Road, W13

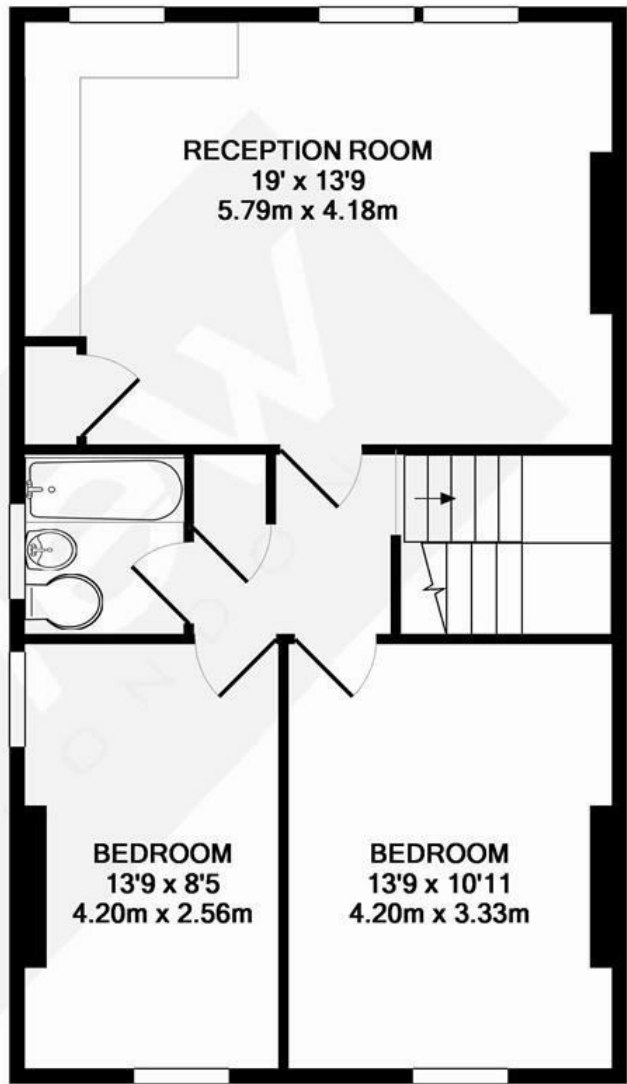
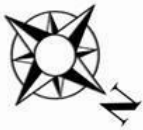
LONG LET. This spacious two bedroom flat is set within a stunning period conversion and is located moments from Ealing Broadway.

- PERIOD CONVERSION
- TWO BEDROOMS
- TOP FLOOR
- GREAT LOCATION
- CLOSE TO PARKS
- HIGH SPEC

£2,200 PCM



1ST FLOOR



2ND FLOOR

TOTAL APPROX. FLOOR AREA 696 SQ.FT. (64.7 SQ.M.)

Whilst every attempt has been made to ensure the accuracy of the floor plan contained here, measurements of doors, windows, rooms and any other items are approximate and no responsibility is taken for any error, omission, or mis-statement. This plan is for illustrative purposes only and should be used as such by any prospective purchaser. The services, systems and appliances shown have not been tested and no guarantee as to their operability or efficiency can be given

Made with Metropix ©2015

Energy Efficiency Rating		
	Current	Potential
Very energy efficient - lower running costs		
(92 plus) <b>A</b>		
(81-91) <b>B</b>		
(69-80) <b>C</b>		
(55-68) <b>D</b>		
(39-54) <b>E</b>		
(21-38) <b>F</b>		
(1-20) <b>G</b>		
Not energy efficient - higher running costs		
<b>England &amp; Wales</b>	EU Directive 2002/91/EC	