



## Gordon Road, W5

Long Let. A stunning newly refurbished 1-Bedroom Ground Floor Flat with an additional basement that can be used for storage or a work from home office is available for immediate occupation.

- Ground floor flat
- Newly refurbished
- Available now
- Close to amenities
- Close to Ealing Broadway
- Direct access to a communal garden

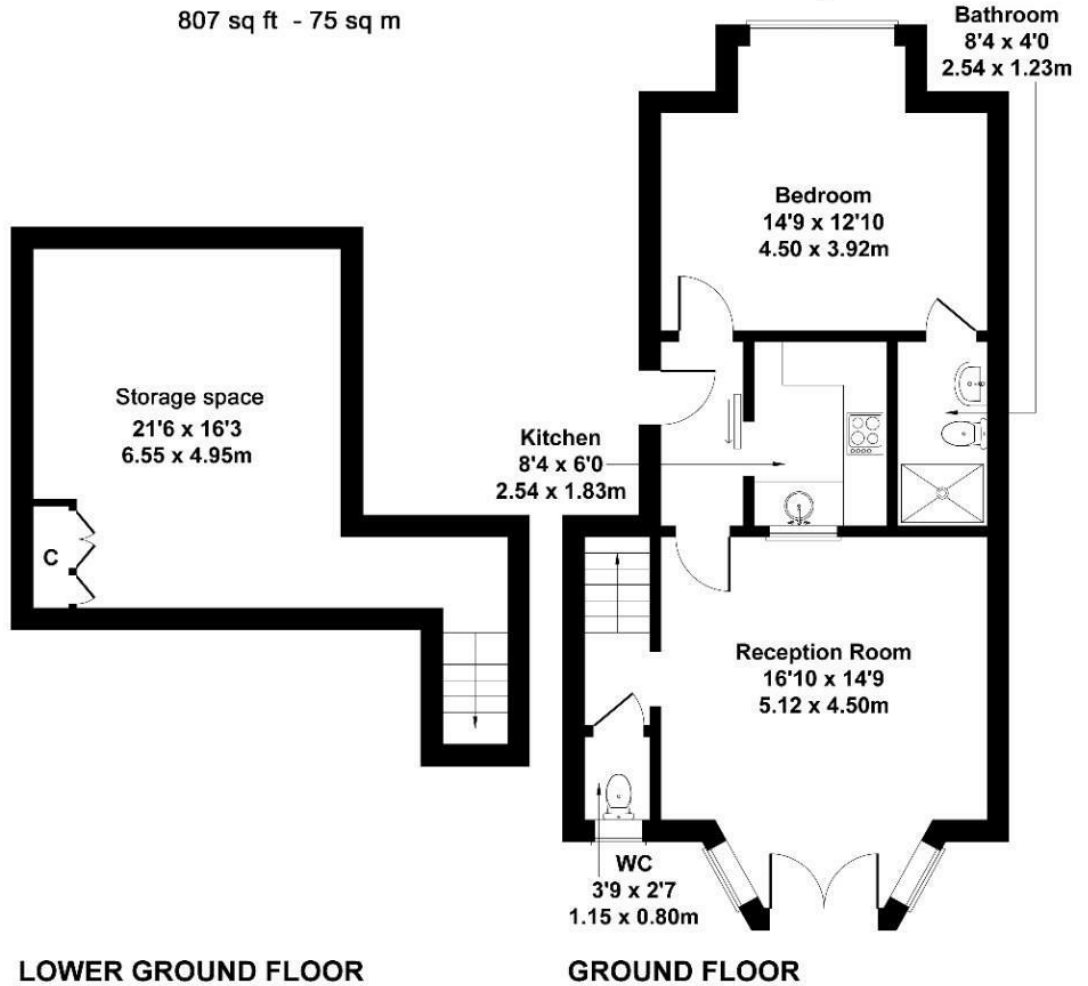
£2,200 Per Month

# Gordon Road

Approximate Gross Internal Area

570 sq ft - 53 sq m ( excluding storage space)

807 sq ft - 75 sq m



Not to Scale. Produced by The Plan Portal 2025  
For Illustrative Purposes Only.

Energy Efficiency Rating		
	Current	Potential
Very energy efficient - lower running costs		
(92 plus) <b>A</b>		
(81-91) <b>B</b>		
(69-80) <b>C</b>	69	77
(55-68) <b>D</b>		
(39-54) <b>E</b>		
(21-38) <b>F</b>		
(1-20) <b>G</b>		
Not energy efficient - higher running costs		
<b>England &amp; Wales</b>	EU Directive 2002/91/EC 