



Winscombe Crescent, W5

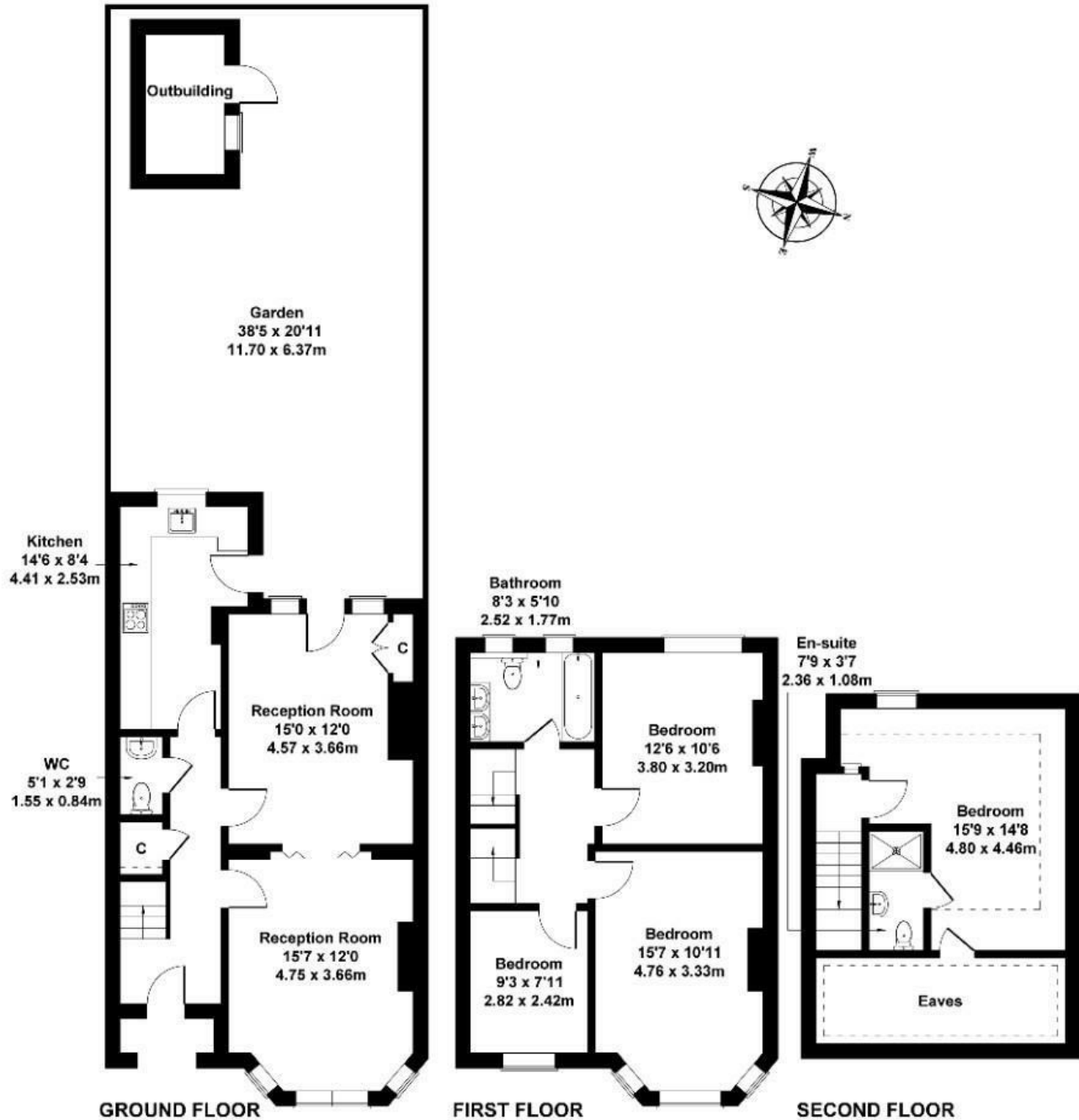
Set in the heart of the Brentham Garden Estate is this large newly refurbished four-bedroom two-bathroom end of terrace house. The property has been newly refurbished to a high level and comes in turnkey condition.

- LARGE FAMILY HOME
- NEWLY REFURBISHED
- FOUR BEDROOMS
- DOUBLE RECEPTION
- TWO BATHROOMS
- CLOSE TO GOOD LOCAL SCHOOLS

£4,500 Per Month

Winscombe crescent

Approximate Gross Internal Area
1367 sq ft - 127 sq m



Not to Scale. Produced by The Plan Portal 2025
For Illustrative Purposes Only.

Energy Efficiency Rating		
	Current	Potential
Very energy efficient - lower running costs		
(92 plus) A		
(81-91) B		
(69-80) C		
(55-68) D		
(39-54) E	58	
(21-38) F		
(1-20) G		
Not energy efficient - higher running costs		
England & Wales		EU Directive 2002/91/EC