



Fairlea Place, London

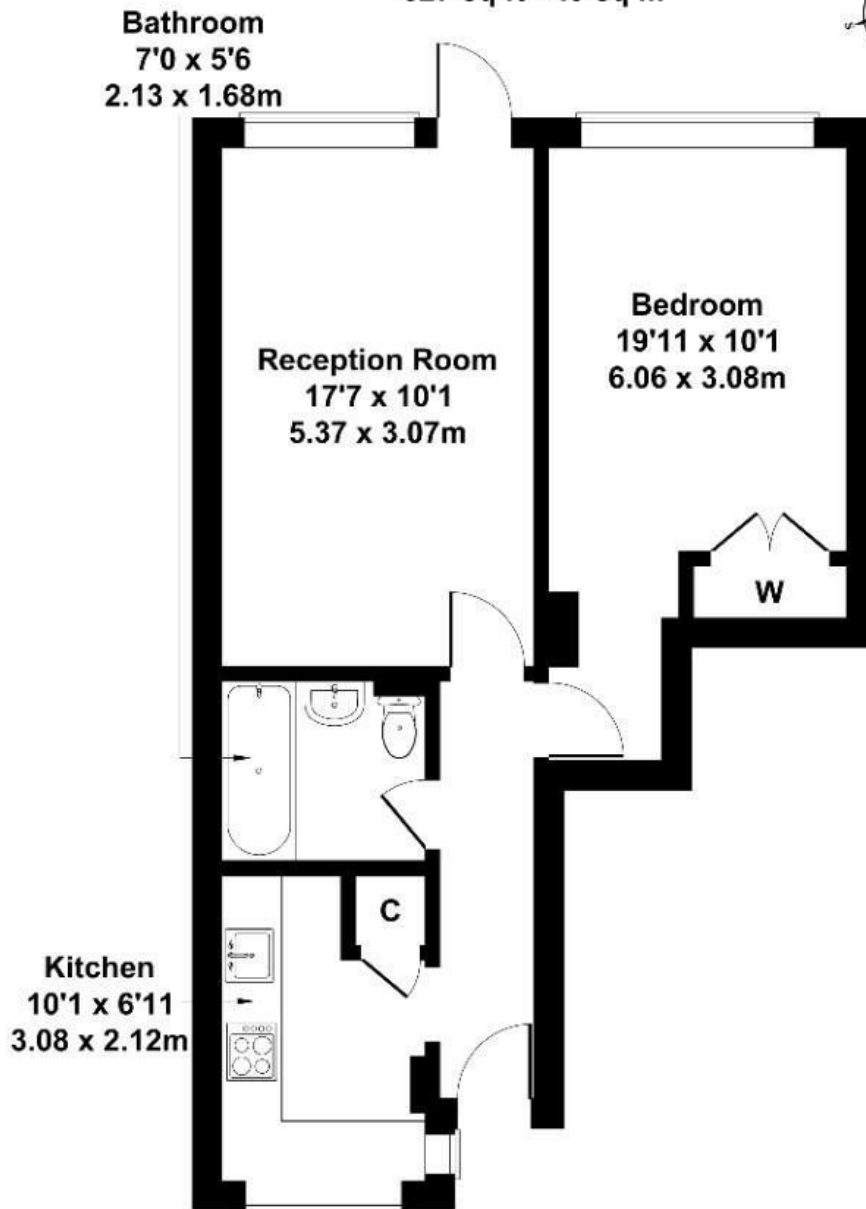
A large one-bedroom maisonette situated on the ground floor within the popular Fairlea Place development and comes with private garage, 986-year lease and no onward chain.

Measuring 527 sq. ft and in need of general updating. The property consists of large reception separate kitchen, double bedroom, family sized bathroom, excellent storage facilities, privately owned garage and comes with no onward chain.

£320,000

Fairlea Place

Approximate Gross Internal Area
527 sq ft - 49 sq m



Not to Scale. Produced by The Plan Portal 2025
For Illustrative Purposes Only.

Energy Efficiency Rating		
	Current	Potential
Very energy efficient - lower running costs		
(92 plus) A		
(81-91) B		
(69-80) C		79
(55-68) D	56	
(39-54) E		
(21-38) F		
(1-20) G		
Not energy efficient - higher running costs		
England & Wales		EU Directive 2002/91/EC