

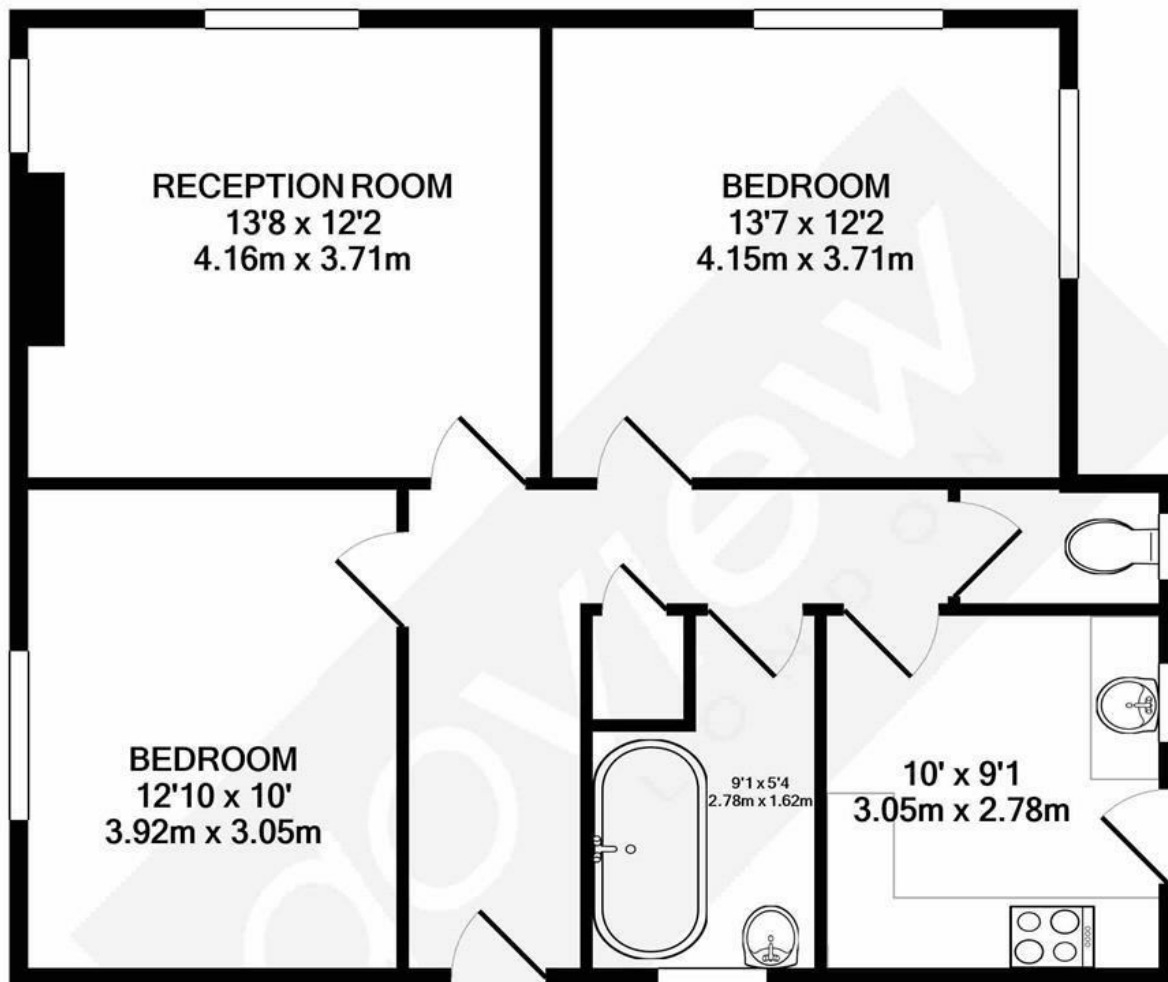


Kings Court, Castlebar Park, W5

SHORT LET BILLS INCLUDED A stylish and exceptionally well presented two bedroom flat offering well proportioned living space, as well as communal gardens and a great location.

- Ground floor apartment
- Two double bedrooms
- Separate kitchen
- Communal gardens
- Close to Ealing Broadway
- Close to amenities

£3,000



TOTAL APPROX. FLOOR AREA 711 SQ.FT. (66.1 SQ.M.)

Whilst every attempt has been made to ensure the accuracy of the floor plan contained here, measurements of doors, windows, rooms and any other items are approximate and no responsibility is taken for any error, omission, or mis-statement. This plan is for illustrative purposes only and should be used as such by any prospective purchaser. The services, systems and appliances shown have not been tested and no guarantee as to their operability or efficiency can be given

Made with Metropix ©2020



Energy Efficiency Rating		
	Current	Potential
Very energy efficient - lower running costs		
(92 plus) A		
(81-91) B		
(69-80) C		
(55-68) D	68	75
(39-54) E		
(21-38) F		
(1-20) G		
Not energy efficient - higher running costs		
England & Wales	EU Directive 2002/91/EC	