



Frithville Gardens, W12

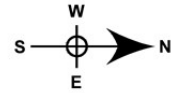
LONG LET. This split level four bedroom flat boasts a modern interior is situated perfectly for local amenities and transport links.

- FOUR BEDROOMS
- IDEAL LOCATION
- FULLY FURNISHED
- AVAILABLE FROM THE 10TH OCTOBER
- CLOSE TO TRANSPORT
- QUITE RESIDENTIAL STREET

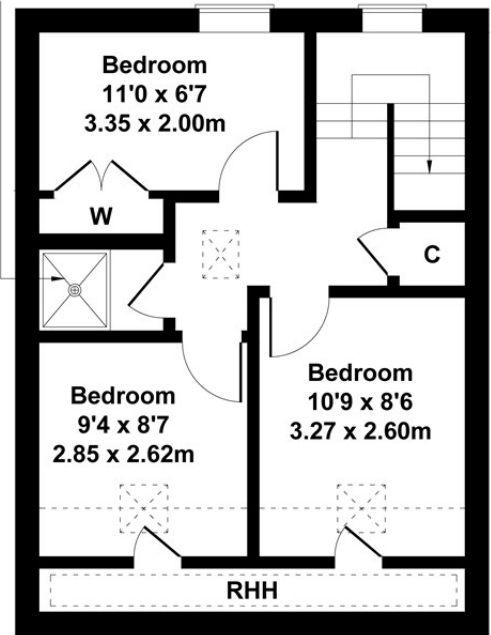
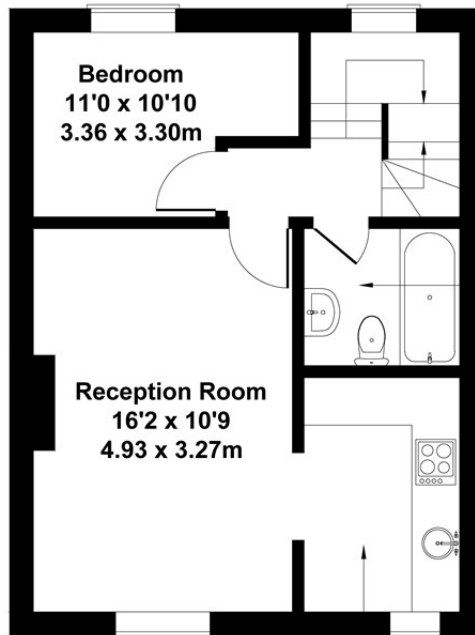
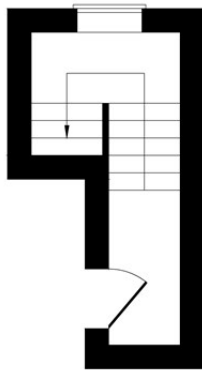
£3,495 PCM

Frithville Gardens

Approximate Gross Internal Area
861 sq ft - 80 sq m



Shower Room
5'2 x 2'6
1.57 x 0.77m



GROUND FLOOR

FIRST FLOOR

SECOND FLOOR

Not to Scale. Produced by The Plan Portal 2022
For Illustrative Purposes Only.

