



Monks Drive, W3

This bright and spacious first-floor apartment is set within Ayr Court, a highly desirable Mock Tudor-style development.

Offering three bedrooms, the property has been recently redecorated and enjoys an abundance of natural light throughout.

The property also offers a generous separate reception room, a separate kitchen, a family bathroom, an allocated shed, a shared patio and access to beautifully manicured communal gardens.

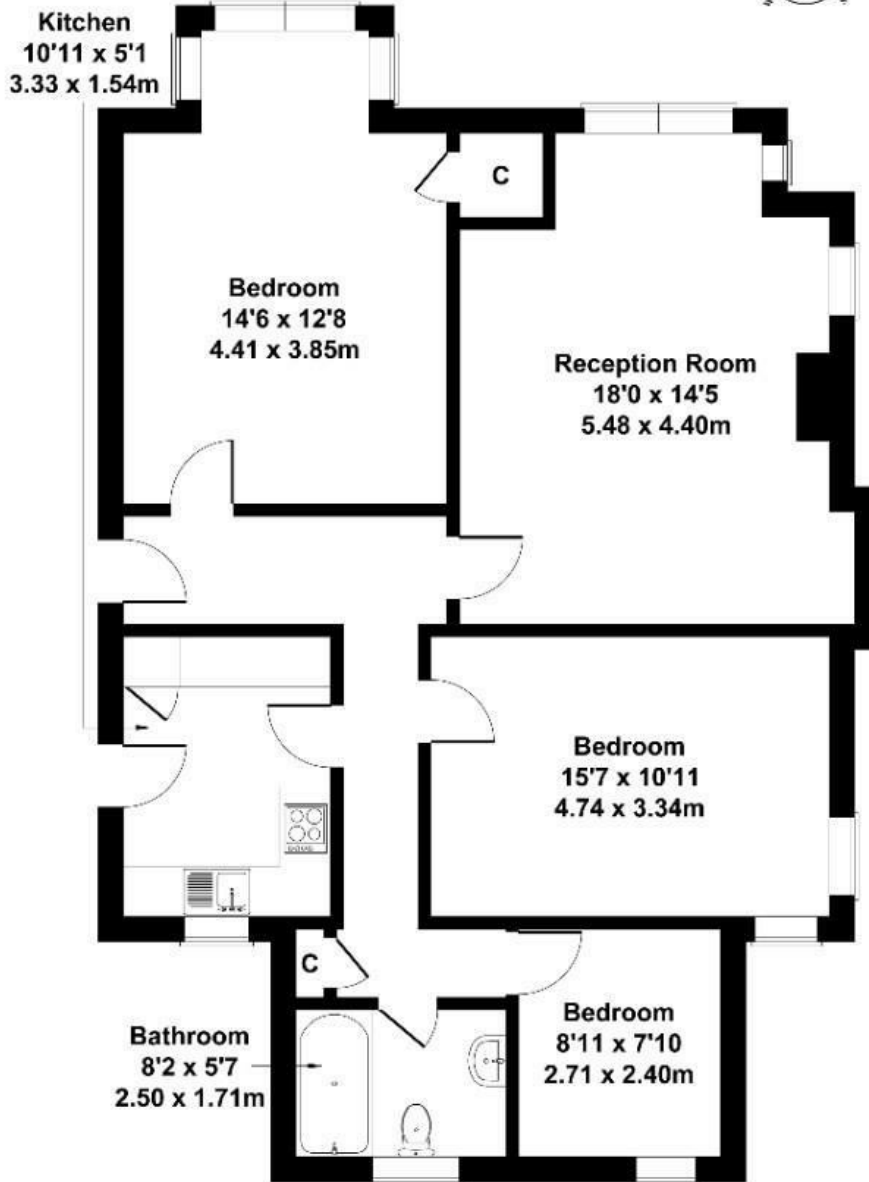
The property is being offered to the market with a long lease and a share of freehold and with no onward chain.

- Three-bedroom apartment
- Over 1,000 sq ft
- Share of freehold (973 years remaining on the lease)
- Small allocated shed
- Beautiful shared gardens
- Ideally located for public transports and motorists
- Quiet location
- No onward chain

£665,000

Ayr Court

Approximate Gross Internal Area
1023 sq ft - 95 sq m



FIRST FLOOR

Not to Scale. Produced by The Plan Portal 2025
For Illustrative Purposes Only.

Energy Efficiency Rating		
	Current	Potential
Very energy efficient - lower running costs		
(92 plus) A		
(81-91) B		
(69-80) C	71	80
(55-68) D		
(39-54) E		
(21-38) F		
(1-20) G		
Not energy efficient - higher running costs		
England & Wales	EU Directive 2002/91/EC	