



The Ridgeway, W3

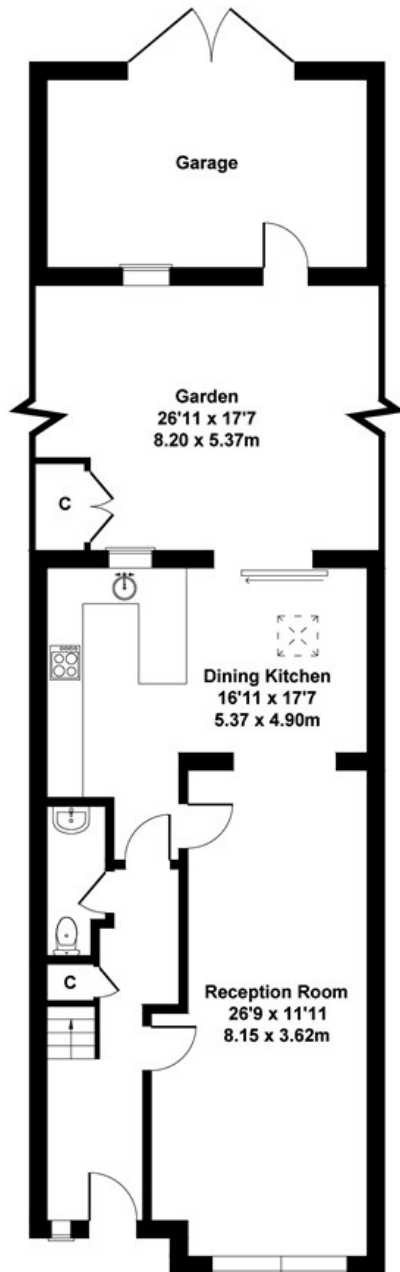
LONG LET: This spacious four-bedroom mid-terrace home, set in the highly desirable Gunnersbury Triangle area.

- Four bedrooms
- Two bathrooms and WC
- Double garage to rear
- Private garden
- Air conditioning
- Close to Acton Town Station

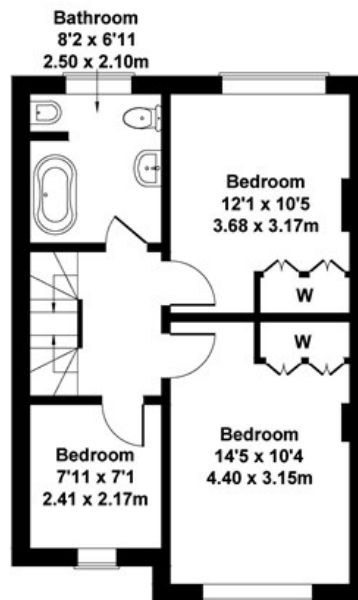
£3,400 Per Month

The Ridgeway

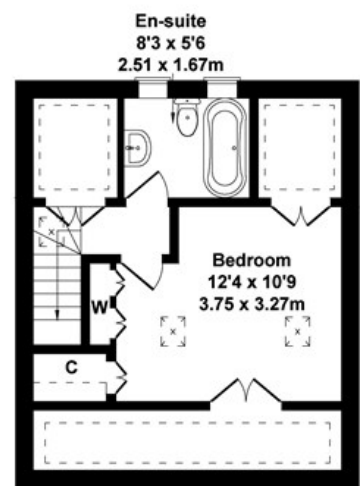
Approximate Gross Internal Area
1464 sq ft - 136 sq m



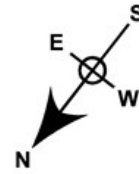
GROUND FLOOR



FIRST FLOOR



SECOND FLOOR



Not to Scale. Produced by The Plan Portal 2020
For Illustrative Purposes Only.

Energy Efficiency Rating		
	Current	Potential
Very energy efficient - lower running costs		
(92 plus) A		
(81-91) B		
(69-80) C		
(55-68) D		
(39-54) E		
(21-38) F		
(1-20) G		
Not energy efficient - higher running costs		
England & Wales	EU Directive 2002/91/EC	

68

82