



Noel Road, W3

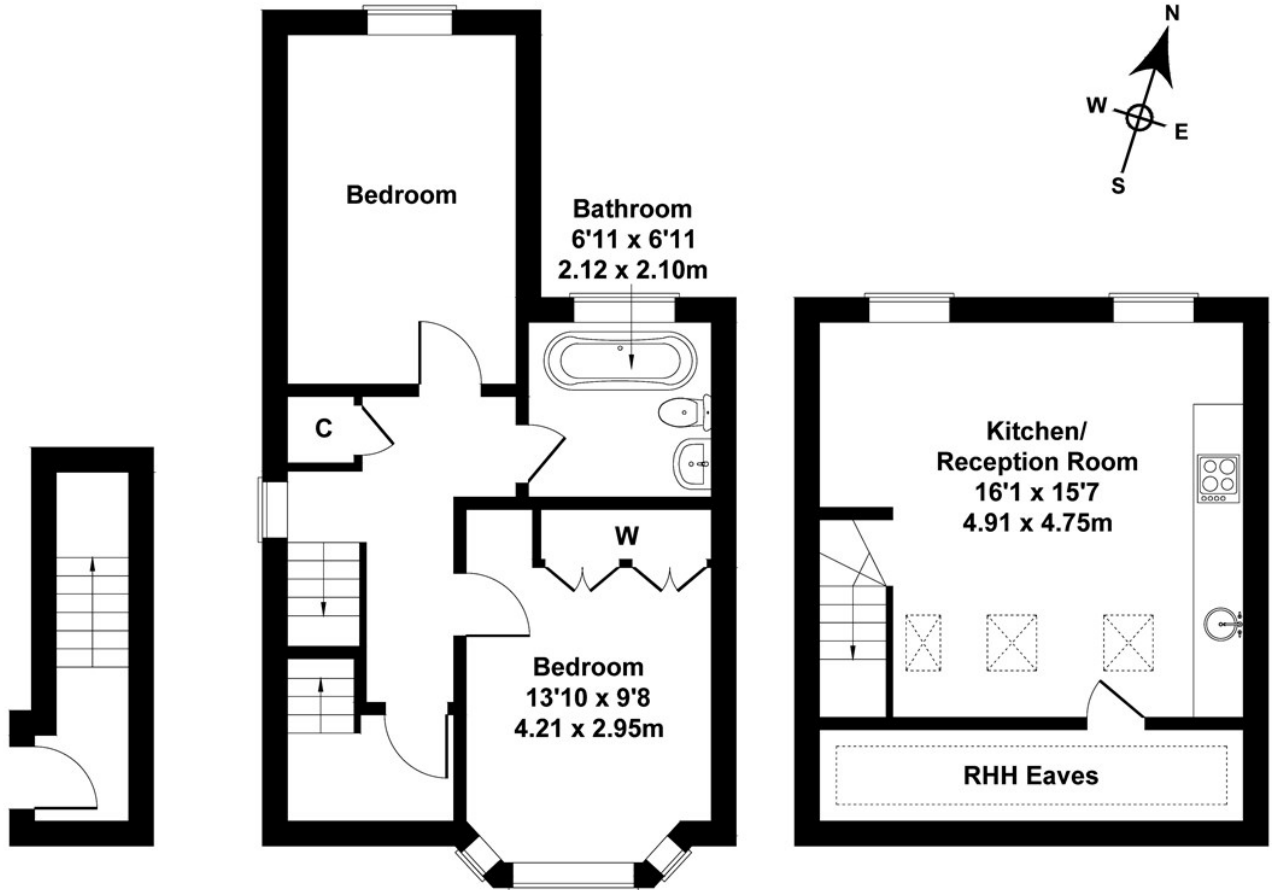
LONG LET. This exceptionally well presented two bedroom flat located in the heart of Acton boasts modern interiors and is ideally located for transport links, amenities and good schools.

- AVAILABLE 10th OCTOBER
- FULLY FURNISHED
- GREAT LOCAL SCHOOLS
- CLOSE TO TRANSPORT LINKS
- MODERN INTERIOR
- CLOSE TO NORTH ACTON PARK

£2,200

Noel Rd

Approximate Gross Internal Area
743 sq ft - 69 sq m



GROUND FLOOR

FIRST FLOOR

SECOND FLOOR

Not to Scale. Produced by The Plan Portal 2022
For Illustrative Purposes Only.

Energy Efficiency Rating		
	Current	Potential
Very energy efficient - lower running costs		
(92 plus) A		
(81-91) B		
(69-80) C		
(55-68) D		
(39-54) E		
(21-38) F		
(1-20) G		
Not energy efficient - higher running costs		
England & Wales	EU Directive 2002/91/EC	