



## The Ridings, W5

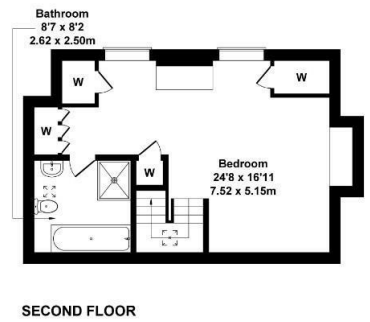
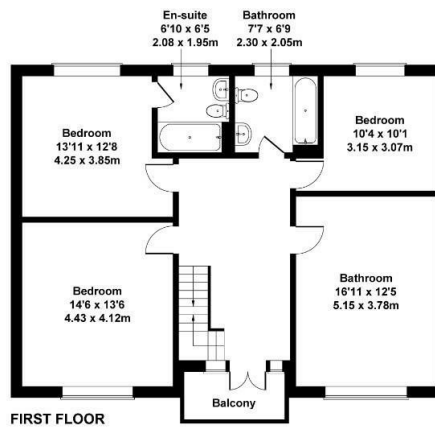
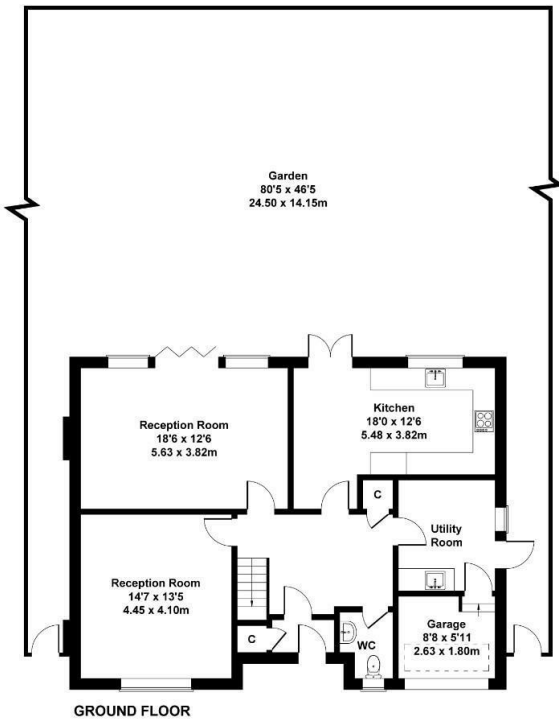
LONG LET. A beautiful five-bedroom detached house set within the sought-after Haymills Estate, just moments from the shops and amenities of Ealing Broadway.

- Double fronted detached home
- Five bedrooms
- Two en suite bathrooms
- Large Garden
- Off-Street Parking
- Unfurnished

£5,500 Per Month

# The Ridings

Approximate Gross Internal Area  
2443 sq ft - 227 sq m



Not to Scale. Produced by The Plan Portal 2025  
For Illustrative Purposes Only.

Energy Efficiency Rating		
	Current	Potential
Very energy efficient - lower running costs		
(92 plus) <b>A</b>		
(81-91) <b>B</b>		
(69-80) <b>C</b>		
(55-68) <b>D</b>		
(39-54) <b>E</b>		
(21-38) <b>F</b>		
(1-20) <b>G</b>		
Not energy efficient - higher running costs		
<b>England &amp; Wales</b>	EU Directive 2002/91/EC 