



Lowfield Road, W3

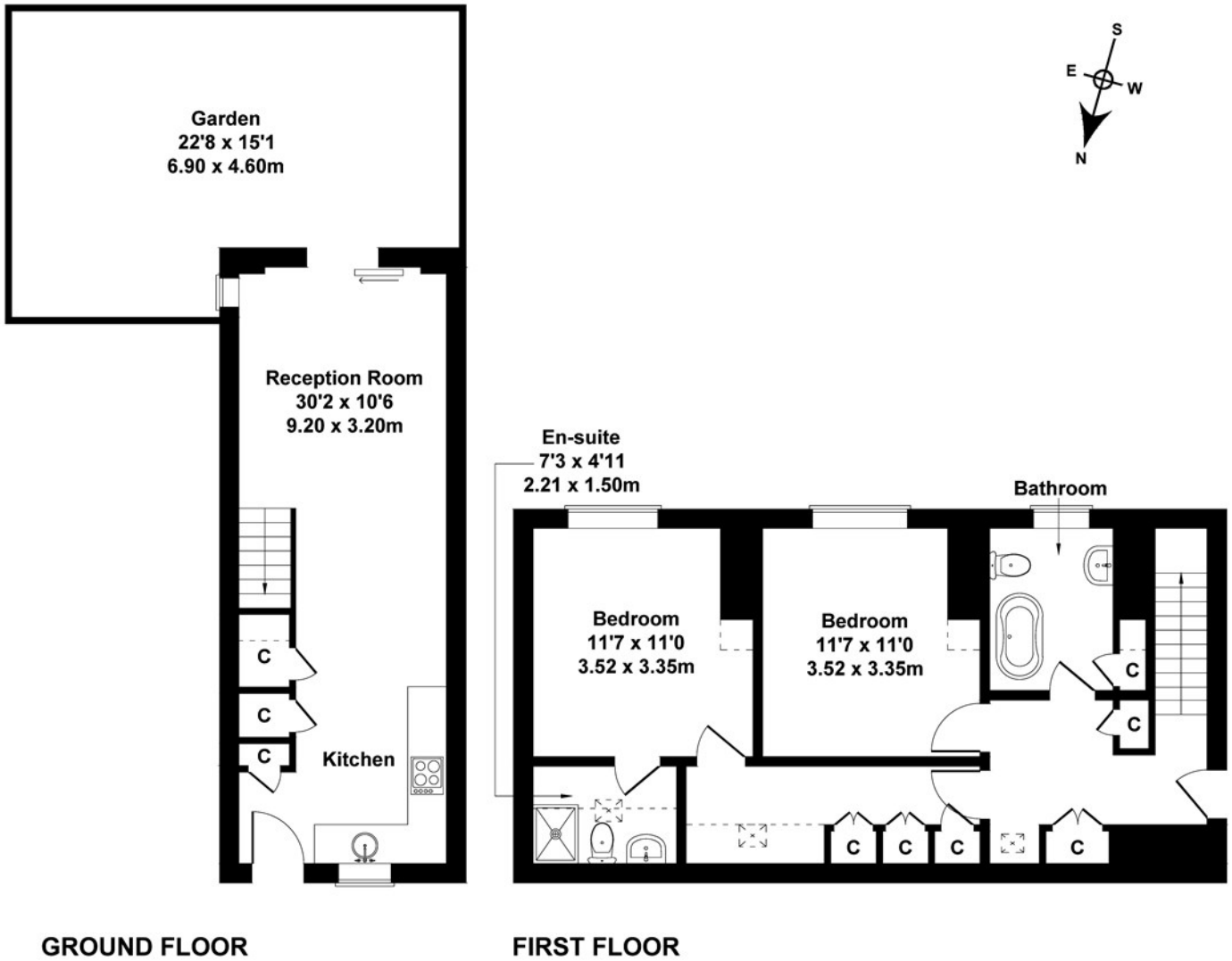
LONG LET. This spacious and beautifully presented two bedroom split level flat is situated in a leafy residential street offering a spacious interior and private garden.

- PRIVATE GARDEN
- OFF STREET PARKING
- TWO BATHROOMS
- CLOSE TO LOCAL TRANSPORT
- AVAILABLE NOW
- CLOSE TO AMENITIES

£2,450 PCM

Lowfield Road

Approximate Gross Internal Area
893 sq ft - 83 sq m



Not to Scale. Produced by The Plan Portal 2021
For Illustrative Purposes Only.

Energy Efficiency Rating		
	Current	Potential
<i>Very energy efficient - lower running costs</i>		
(92 plus) A		
(81-91) B		
(69-80) C		
(55-68) D		
(39-54) E		
(21-38) F		
(1-20) G		
<i>Not energy efficient - higher running costs</i>		
England & Wales	EU Directive 2002/91/EC	