



Cumberland Park, W3

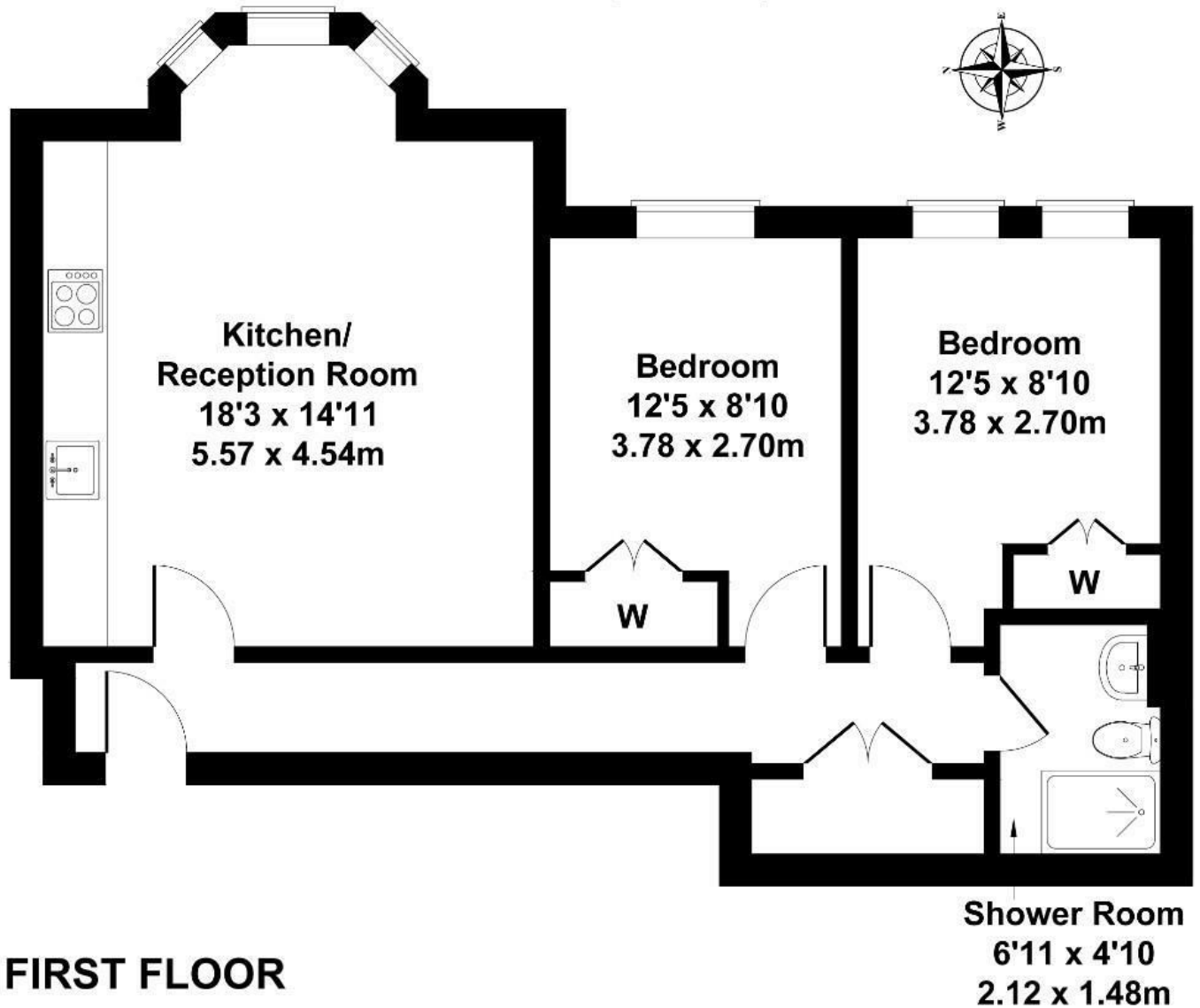
LONG LET: Located on a quiet residential street in the heart of Cumberland Park, this well-finished first-floor flat offers generous and balanced living space throughout.

- Modern new build flat
- Bright open-plan living space
- Two double bedrooms
- Stylish shower room
- Integrated kitchen appliances
- Near Elizabeth Line & Overground

£2,750

Cumberland Park

Approximate Gross Internal Area
624 sq ft - 58 sq m



FIRST FLOOR

Not to Scale. Produced by The Plan Portal 2025
For Illustrative Purposes Only.

Energy Efficiency Rating		
	Current	Potential
Very energy efficient - lower running costs		
(92 plus) A		
(81-91) B		
(69-80) C		
(55-68) D		
(39-54) E		
(21-38) F		
(1-20) G		
Not energy efficient - higher running costs		
England & Wales	EU Directive 2002/91/EC	