



## Cumberland Park, W3

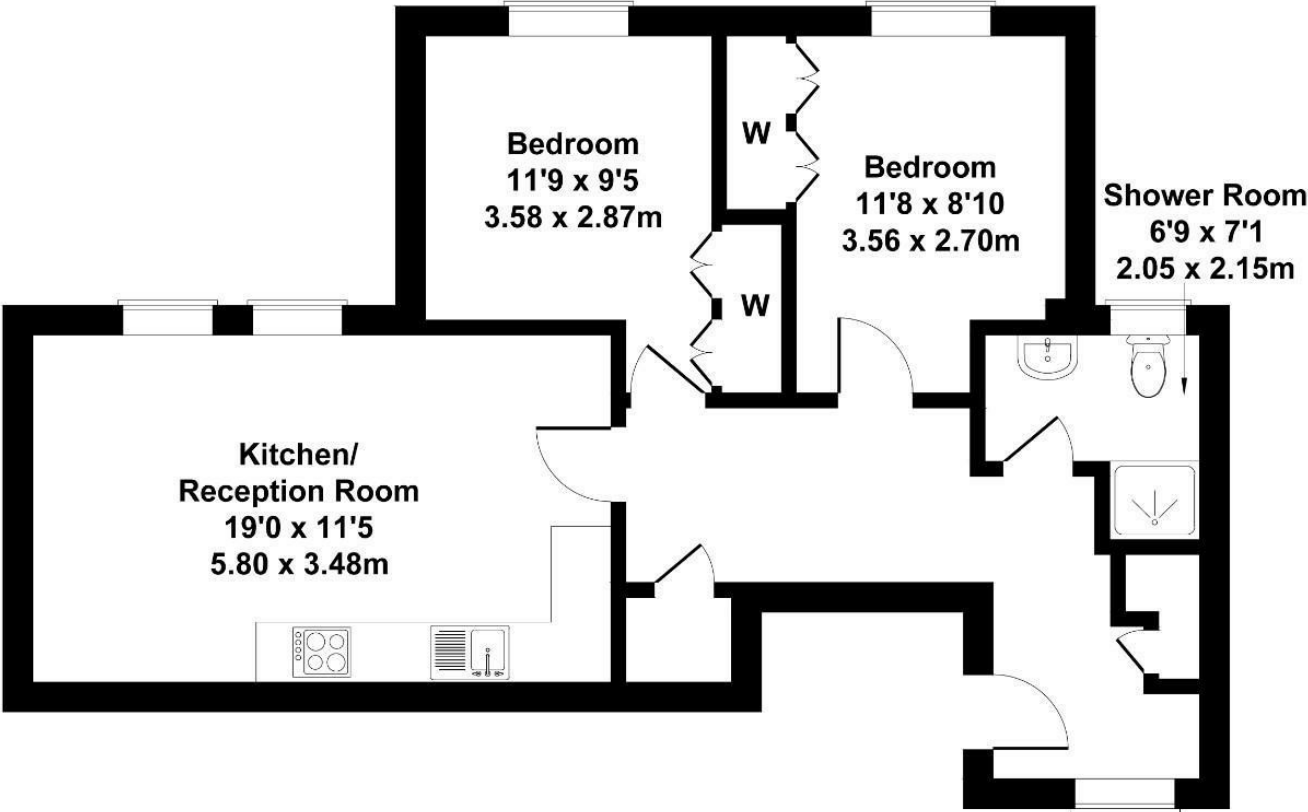
LONG LET: Located on a quiet residential street in the heart of Cumberland Park, this well-finished first-floor apartment offers generous and balanced living space throughout.

- Modern new build flat
- Bright open-plan living space
- Two double bedrooms
- Stylish shower room
- Integrated kitchen appliances
- Hidden storage with washer

£2,750

# Cumberland Park

Approximate Gross Internal Area  
635 sq ft - 59 sq m



## FIRST FLOOR

Not to Scale. Produced by The Plan Portal 2025  
For Illustrative Purposes Only.

Energy Efficiency Rating		
	Current	Potential
Very energy efficient - lower running costs		
(92 plus) A		
(81-91) B		
(69-80) C		
(55-68) D		
(39-54) E		
(21-38) F		
(1-20) G		
Not energy efficient - higher running costs		
England & Wales	EU Directive 2002/91/EC	