



## Gunnersbury Lane, W3

This elegantly presented Edwardian terraced home offers over 1,500 sq ft of flexible living space, carefully laid out across two well-designed floors.

The heart of the home is an impressive open-plan kitchen and dining space, featuring a fully equipped kitchen/breakfast area ideal for modern living and entertaining.

The property also includes four bedrooms, two bathrooms, a convenient utility room with a guest WC, a separate reception room and a spacious cellar for additional storage.

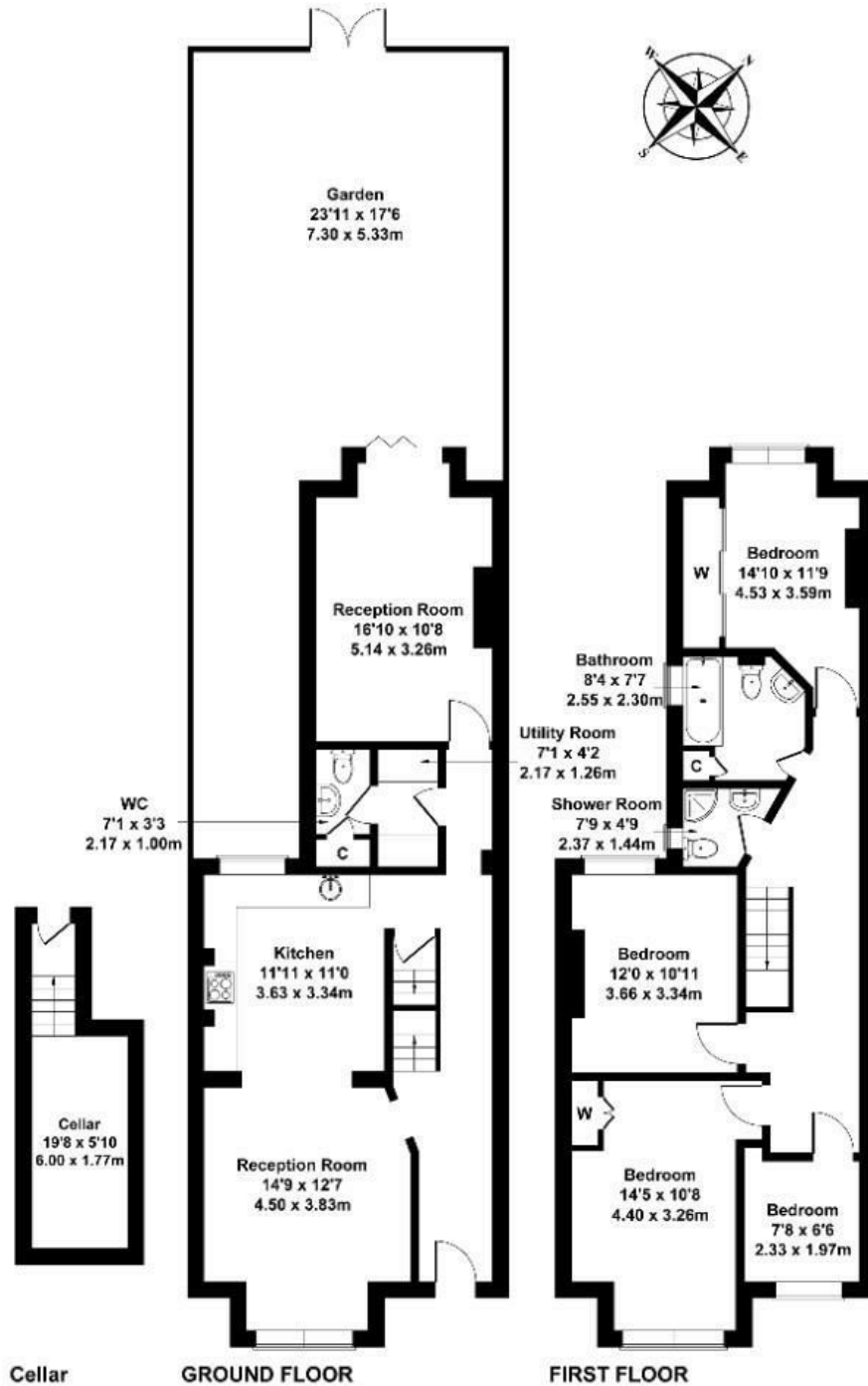
The house also enjoys a beautifully kept private rear garden and offers potential for a loft conversion, subject to the necessary planning consents.

- Four bedrooms
- Fully fitted kitchen/breakfast room
- Large cellar
- Well-maintained private rear garden
- Reputable local schools close by
- Excellent transport links and local amenities nearby

£929,950

# Gunnersbury lane

Approximate Gross Internal Area  
1518 sq ft - 141 sq m



Not to Scale. Produced by The Plan Portal 2025  
For Illustrative Purposes Only.

