



## Disraeli Road, Ealing

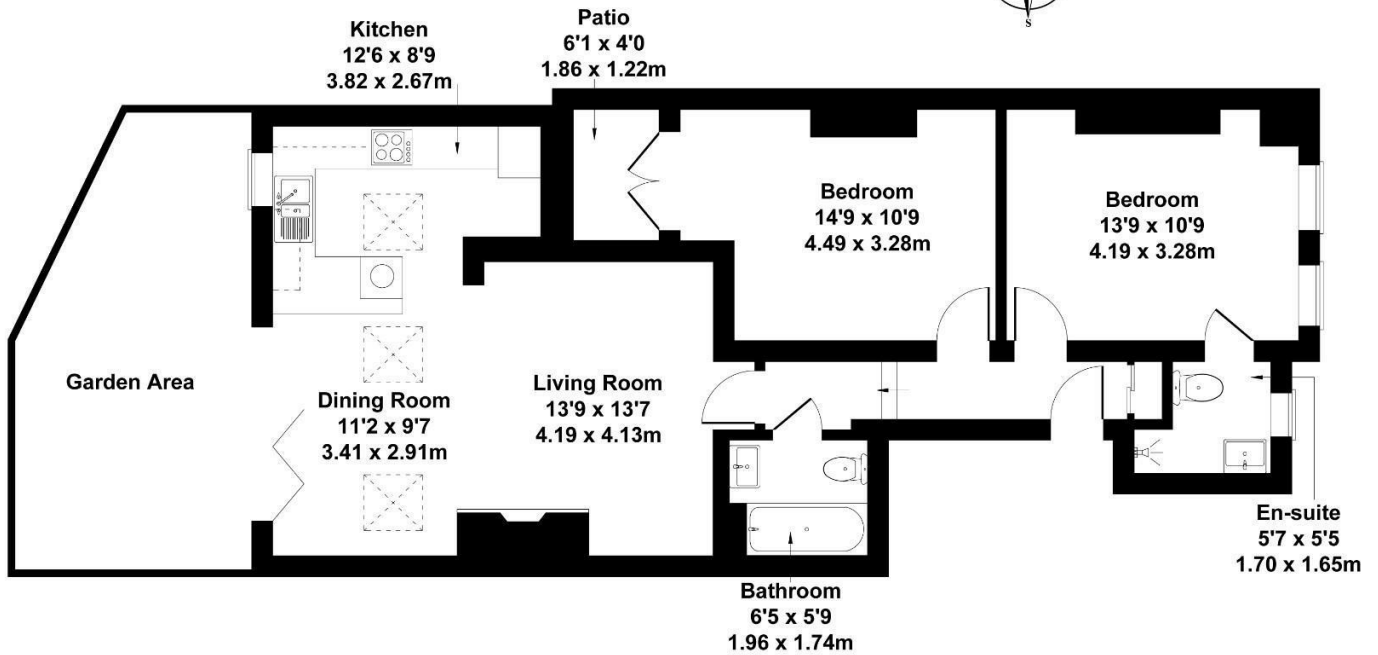
LONG LET. This beautifully presented two double, two bathroom family ground floor apartment with ample storage is conveniently located within close proximity to Ealing Broadway and Lammas Park.

- TWO DOUBLE BEDROOMS
- TWO BATHROOMS
- HIGH QUALITY FINISH
- CENTRAL EALING LOCATION
- PRIVATE GARDEN
- CLOSE TO PARKS
- CLOSE TO STATIONS

£2,875 Per Month

## Disraeli Road,

Approximate Gross Internal Area  
775 sq ft - 72 sq m  
(Excluding Patio)



Not to Scale. Produced by The Plan Portal 2025  
For Illustrative Purposes Only.

Energy Efficiency Rating		
	Current	Potential
Very energy efficient - lower running costs		
(92 plus) <b>A</b>		
(81-91) <b>B</b>		
(69-80) <b>C</b>		
(55-68) <b>D</b>		
(39-54) <b>E</b>	55	
(21-38) <b>F</b>		
(1-20) <b>G</b>		
Not energy efficient - higher running costs		
<b>England &amp; Wales</b>	EU Directive 2002/91/EC	