



## Heathcroft, W5

An imposing double fronted detached Haymills home with five double bedrooms that has been extensively redecorated to the highest of quality. The home includes an integrated garage and multiple off-street parking spaces.

The awe-inspiring home provides ample space for family life and spans to close to 2400sq ft, with potential extend further at the rear.

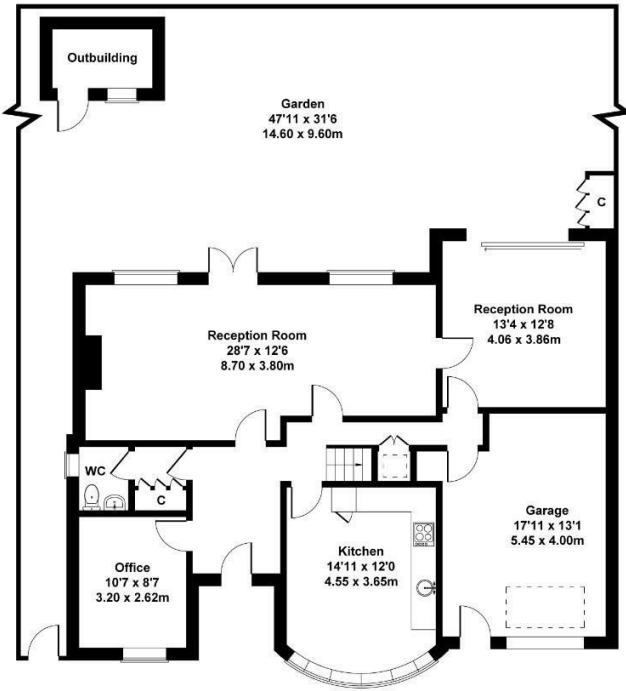
The ground floor area consists of two large interconnecting reception areas, separate eat in kitchen, large garage, Office or dining room and WC with large utility area.

£1,675,000

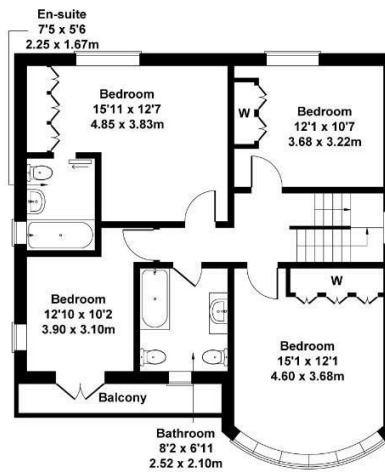
- Detached home
- Five bedrooms
- Three bathrooms
- No chain
- Multi off street parking
- Newly decorated
- Integrated garage
- Close to multiple transport links
- Schools close by
- Short distance to Ealing Broadway

## Heathcroft

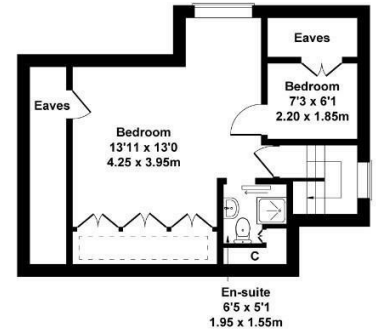
Approximate Gross Internal Area  
2379 sq ft - 221 sq m  
(Excluding Garden & Eaves)



GROUND FLOOR



FIRST FLOOR



FIRST FLOOR

Not to Scale. Produced by The Plan Portal 2025  
For Illustrative Purposes Only.

