

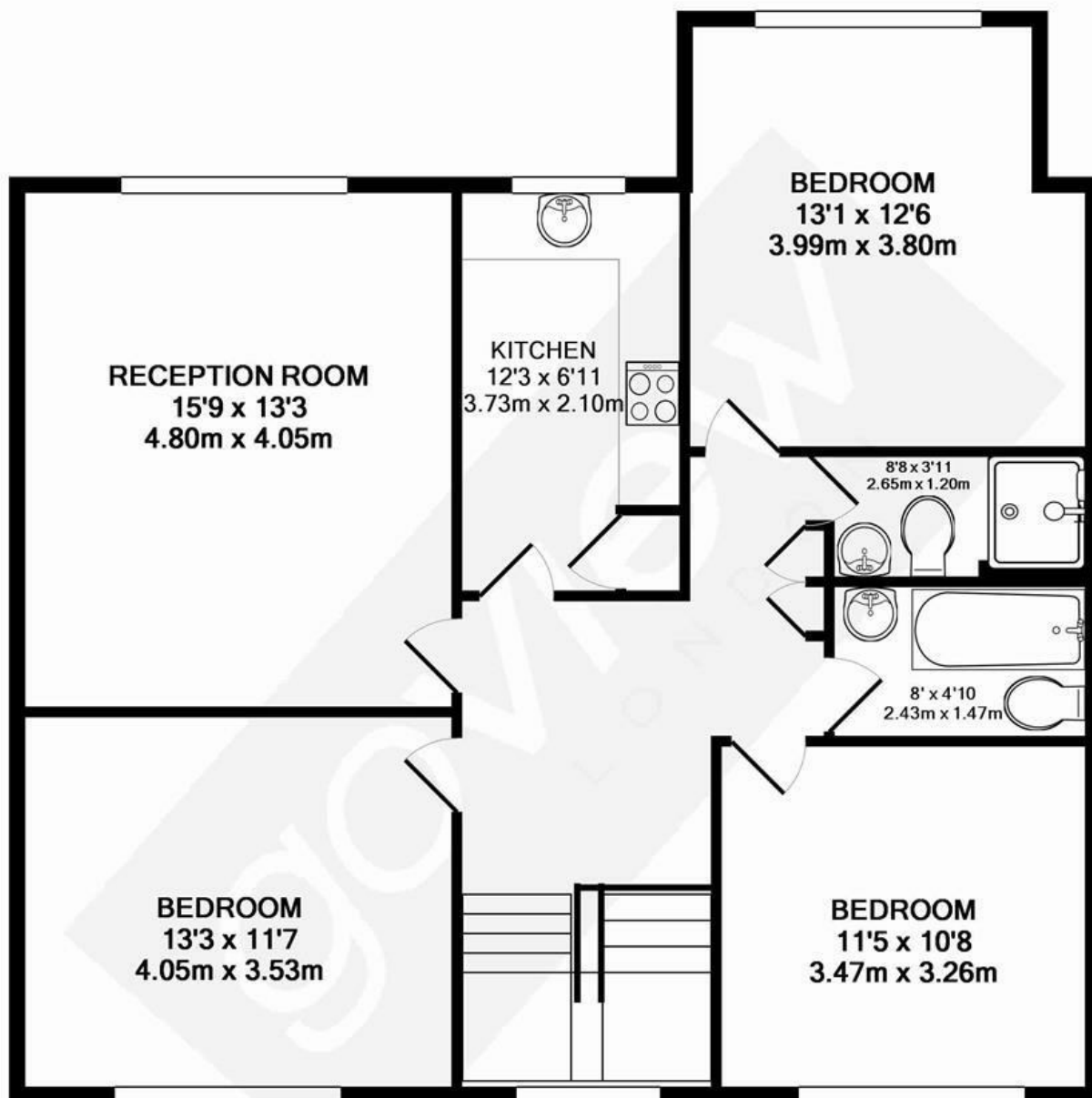


Westbury Road, W5

LONG LET. This well presented three bedroom flat boasts beautiful interiors, modern décor and is well located close to local amenities and transport links.

- THREE DOUBLE BEDROOMS
- LARGE RECEPTION ROOM
- TWO MODERN BATHROOMS
- AVAILABLE EARLY SEPTEMBER 2025
- CLOSE TO TRANSPORT
- GREAT LOCATION

£3,100 PCM



TOTAL APPROX. FLOOR AREA 946 SQ.FT. (87.9 SQ.M.)

Whilst every attempt has been made to ensure the accuracy of the floor plan contained here, measurements of doors, windows, rooms and any other items are approximate and no responsibility is taken for any error, omission, or mis-statement. This plan is for illustrative purposes only and should be used as such by any prospective purchaser. The services, systems and appliances shown have not been tested and no guarantee as to their operability or efficiency can be given

Made with Metropix ©2015

Energy Efficiency Rating		
	Current	Potential
Very energy efficient - lower running costs		
(92 plus) A		
(81-91) B		
(69-80) C		
(55-68) D		
(39-54) E		
(21-38) F		
(1-20) G		
Not energy efficient - higher running costs		
England & Wales	EU Directive 2002/91/EC	